



The HERB SOCIETY *of* AMERICA

**An Inventory
of
Records and Manuscripts
in
The Herb Society of America Archives
1933-2020**

Processed: 1996-1997
James Shelly, Archivist

Revised 2/1/2012
Helen M. Tramte

Revised 8/1/2017
Chris Wilkinson

Revised April 2020
Amy E. Dawson

The Herb Society of America Archives – Table of Contents

	<u>Page</u>
History of The Herb Society	3-4
Scope and Content of Records	4-8
Record Group I: National Organization	9-28
Administrative	9-17
Education and Research	17-23
Growth and Development	23
Awards and Recognition	23-28
Early History	28-30
Record Group II: Members-at-Large	30-31
Record Group III: Units	31-43
Record Group IV: Photographs and Scrapbooks	43-49
Record Group V: Publications	49-53
Record Group VI: Artifacts and Memorabilia	53-54
Record Group VII: Oversize	54
Record Group VIII: National Organization 1988-present	54-65
Record Group IX: Members' Papers	65-66
Record Group X: Ephemera	67
Addendum	67-77

The systematic collection of The Herb Society of America's records began in 1974 with the appointment of Priscilla Sawyer Lord to the office of Historian. As a tribute to her efforts, the Priscilla Sawyer Lord Archives Room was dedicated on October 15, 1994.

The Archive is open for research to all members of The Herb Society of America by appointment, and to non-members with the permission of the Executive Director.

History

The Herb Society of America was organized in 1933 from a study group of seven women: Adeline Philbrick Cole, Anne Shirk Burrage, Harriet Addams Brown, Corinna Searle Mitchell, Florence Brown Bratenahl, Ella Hulst Greenslet, Frances Torrey Norton. They were motivated by the belief that much of the world's knowledge about useful plants had been forgotten and that herbs had declined to the level of a hobby among a few growers of old-time gardens.

The first organizational meeting was held in Wenham, Massachusetts. The seven founders soon solicited the help and interest of a professional horticulturist, Dr. Edgar Anderson, of the Arnold Arboretum at Harvard University. The Society began recruiting members, primarily from New England and the Mid-Atlantic states. Among its initial projects during the 1930s, The Society established public herb gardens at the Lexington Botanic Garden and, through the efforts of Florence Bratenahl, at the National Cathedral in Washington, D. C.

In 1935, The Society began renting space at the Massachusetts Horticultural Society in Boston. The New England unit was officially incorporated that year, followed by units in California (1936), New York (1938), and Philadelphia (1940). Units in St. Louis and Cleveland (Western Reserve) were added in 1942. Activities and projects of The Society from the late 1930s through the 1940s focused on research, gardens, and outreach (dissemination of information). In addition to exhibits, The Society produced herbal bibliographies, started work on an herbarium, and distilled member research into a yearly publication, *The Herbarist*. During World War II (1941-1945) The Society's work achieved national importance due to the curtailment of herb shipments from Europe. To alleviate the war-time scarcity, and serve the war effort, The Society acted as a clearing-house for information about herbs and conducted experiments in growing medicinal herbs.

Moderate but steady growth led to 484 members in 1951, and the creation of additional units. To accommodate prospective members who lived outside major urban areas, a new membership category, Member-at-Large, was created according to geographical regions. In 1952, the first award ceremony was held to honor the contributions of members, Frances Ropes Williams receiving the first Award of Merit. Over the next few decades, The Society continued a strong publishing tradition by producing special publications on herb garden design, beginner's guides, traveler's guides (to herb gardens), and how to judge exhibits. Another component of The Society's educational programming, originating in the early 1950s, was a series of slide lectures.

The Society's main yearly event for members was the Annual Meeting. Hosted by the units on a rotating basis – and occasionally by the members at large – the three-day affairs provided opportunities for social, educational, administrative, and policy-making meetings and activities.

Membership growth tripled over the next three decades reaching, by 1980, 1004 members in over 18 units, plus 575 MAL. In background, members generally ranged from serious amateurs and hobbyists to professional gardeners, horticulturalists and botanists. One of The Society's best-known members was a gourmet cook, Julia Child. By the mid-1990s, a renewed national interest in the uses of herbs doubled The Herb Society's membership to over 2000.

Although The Society's administrative structure underwent many minor permutations, its basic administrative structure remained largely fixed, consisting of a president and officers, executive board, and various committees. Since 1946, presidents of The Herb Society of America have been elected for one, two-year term. Until 1996, the Board of Directors was composed primarily of unit and member at large chairs. As this system of board selection had become unwieldy by the 1990s, due to the increasing number of units, the board was streamlined to seventeen elected by the membership.

In the 1970s, The Society expanded its educational programs through the creation of a scholarship program, the first scholarship being awarded to Arthur O. Tucker for the study of *Mentha*. Building on its tradition of "teaching gardens," The Society took on its most ambitious and publicly most important educational project when, in 1976, it signed an agreement with the Agricultural Research Service to establish the National Herb Garden at the National Arboretum in Washington, D. C. A longtime dream of The Society, the idea for the National Herb Garden had been revived by Edna Cashmore in the 1960s and carried to fruition through the considerable efforts of three successive presidents in the 1970s. Genevieve Jyurovat, Elizabeth Rea, and Eleanor Gambee.

In 1987, The Society relocated its national headquarters from Concord, Massachusetts to Kirtland, Ohio. The new headquarters is on a 3.5-acre site adjacent to the Holden Arboretum.

For additional historical information, see *The Herb Society of America, 1933-1993* by Dorothy G. Spencer.

Scope and Content

The records of The Herb Society of America cover the years 1935 to present. (Administrative records after 1988 will be mostly processed as a separate record group.) The records document the historical development and growth of The Herb Society of America as a horticultural organization of unique and national importance. In addition to their organizational importance, the records are also of interest for information on herbs and in documenting the changing role of herbs in American society. Of particular interest are the organization's World War II-era records that document The Society's national role in coordinating information about the culture and production of medicinal herbs. Also to be found are records relating to the critical role that The Herb Society of America had in establishing a National Herb Garden at the National Arboretum in Washington, D. C., dedicated in 1980. Because The Society was founded by women and, historically, has had a predominant female membership, the records might also be of interest in the area of women's studies.

The largest group of file documents is the administrative structure and activities of The Society. These include, from 1943, the minutes of the Executive Board Meetings, Annual Meetings, By-Laws, and Presidents' files. With its membership scattered throughout the United States, the national organization, in order to effectively function, relied heavily on correspondence between

officers and other members. As a result, the archive is notable for a substantial correspondence vividly documenting policy-making decisions, as well as program, herbal, and biographical information.

In arranging The Society's records, original order was maintained insofar as possible. The folder contents are maintained within a designated chronological range (e.g. 1978-1979) and item-by-item chronological order. Other records, such as photographs, have been arranged topically.

The provenance of the records was largely influenced by the two primary administrative elements: committees and presidents. Because each president and committee chair used her own filing system, and because of the frequent change in presidents (every two years), administrative records were inconsistently maintained, retained, and collected, but have been re-ordered in a fashion to best facilitate access.

Number of Containers: 357

Shelf Space Occupied: 205 linear feet

Restrictions: Processed records are open for research unless restricted by donor.

Credit Statement: Preferred Citation for the materials in The Herb Society of America Archives: The Herb Society of America Archives.

Record Groups and Series

The records are divided into ten record groups:

- RG 1 – National Organization, 1933-1988
- RG 2 – Members at Large
- RG 3 – Units
- RG 4 – Photographs (and scrapbooks)
- RG 5 – Publications (and news/article clippings)
- RG 6 – Artifacts and Collectibles
- RG 7 – Oversize Materials
- RG 8 – National Organization, 1988-
- RG 9 – Personal Papers
- RG 10-Ephemera

The largest group, RG 1 – National Organization, is further divided into nine series. The series were created to most accurately reflect the various activities of the national organization. Education and Research, Growth and Development, and Awards and Recognition are examples of three such series. Unit and Members at Large records were given their own record groups in order to preserve the semi-autonomous nature of those member groups. Photographs, Publications, Artifacts (3-dimensional objects) and Oversize Materials were assigned separate record groups primarily based on their special preservation and storage requirements.

Record Group 1: National Organization

Series 1.1 Administrative, 1943-1989, 20.5 linear feet, 21 boxes

- Executive Board Meetings, 1943-1988
- By-Laws, 1946-1950s
- Annual Meetings, 1943-1989
- Budget and Finance, 1958-1989
- General Correspondence (Outgoing), 1957-1983
- Nominating Committee, 1953-1969
- Handbook for Executive Board, 1964-1974
- Presidents' Papers, 1947-1988
- Presidents' Notebooks, biographical information, 1930-current
- Legal, 1953-1989

Series 1.2 Education and Research, 1937-current, 14.75 linear feet, 23 boxes

- Lecture Committee, 1957-1988
- Botany and Horticulture Committee, 1965-1988
- Bibliography Committee, 1937-1960
- Scholarship Committee, 1963-1984
- Archives/History, 1977-1986
- Herb Exhibits and Judging, 1949-1969
- Library, 1972-1976
- Slide Lectures (texts), 1951-1959
- Grant Recipients Reports
- Travel/Tours, 1976-1989
- National Herb Garden, 1966-1988
- Ways and Means Committee, 1960-1987
- Publications Committee, 1958-1987
- Newsletter Committee, 1963-1987
- Herbarist Committee

Series 1.3 Growth and Development, 1955-1989, 4 linear feet, 6 boxes

- Organizational Planning, 1975-1985
- Endowment Fund, 1962-1975
- Membership, 1983-1988
- Outside Inquiries, 1982-1988

Series 1.4 Awards and Recognition, 1954-1988, 4.1 linear feet, 7 boxes

- Award Winners, 1952-1988
- Awards Committee, 1955-1988
- Anniversaries/Special Events

Series 1.5 Early Records/Early History, 1933-1949, 4.1 linear feet, 8 boxes

This series contains items from The Society's early years deemed of significant or representative historical value. Includes correspondence, monographs, membership lists, exhibit information, botanic garden lists, administrative information, etc.

Record Group 2: Members-at-Large, 1961-current, 3.4 linear feet, 9 boxes

MAL records include newsletters, correspondence, chairmen letters, membership information, a history, and information on the Great Lakes Herb Symposium to the present.

Record Group 3: Units, 45 linear feet, 80 boxes

The amount and type of records varies from unit to unit, although generally the older units have the largest collections. Photographs may have been removed to RG 4.

Arkansas, 1966 –
Baton Rouge, 1991 –
Blue Ridge Unit, 1997-2002, disbanded
California, North and South Units, 1948-1955
California Foothills, 1998-2000
Central Indiana, 1997 –
Central Ohio, 1982 –
Chattahoochee, 1981 –
Colonial Triangle of Virginia, 2000 –
Colorado West Desert, 1999-2000, disbanded
Connecticut, 1955 –
Delaware County, 1997 –
Delaware Valley, 1982 –
Fountain City, 2005 –
Frankenmuth/Mid-Michigan, 1982 –
Grosse Point, 1984 –
Hancock County, 1998-2005, disbanded
Heart of the Valley, 2009 –
Herb Guild, 1989-1993, disbanded
Hill Country, 2007 –
Hoover, 1989-1995, disbanded
Kentuckiana, 1983 –
Long Island, 1991 –
Mason Dixon, 2003 –
Michiana, 2005 –
Nashville, 1980 –
New England, 1935 –
New Orleans, 1991 –
New York, 1938 –
North Carolina, 1982 –
North Texas (formerly North and Central Texas), 1989 –

Northeast Seacoast, 1987 –
 Northeast Wisconsin, 2002 –
 Northern Illinois, 1978 –
 Northern New Jersey, 1970 –
 Old Alabama Town, 1999-2007, disbanded
 Ozark, 2007 –
 Pennsylvania Heartland, 1985 –
 Philadelphia, 1937 –
 Pioneer, 1994 –
 Pomona Valley, 1998-2000, disbanded
 Portland, 1942-1946
 Portland, 2003 (never became a unit)
 Potomac (formerly Greater Washington, D. C.), 1964 –
 Ridge and Valley, 2002 –
 Roanoke Valley, 2000 –
 Rocky Mountain, 1996 –
 Sangre De Cristo, 1999
 Shenandoah, 2009 –
 South Jersey, 1997 –
 South Texas, 1968 –
 Southeast Texas, 2009 –
 Southern California, 1953 –
 Southern Michigan, 1969 –
 Southern Ontario, 1968-2000, disbanded
 St. Louis, 1941-1954, disbanded
 Susquehanna, 1980-2000, disbanded
 Tampa Bay, 1993-2000, disbanded
 Tidewater, 1991 –
 Virginia, 1958-1966, disbanded
 Virginia Commonwealth, 1987 –
 Western Pennsylvania, 1958 –
 Western Reserve, 1942 –
 Wisconsin, 1976 –
 York/Durham, 1997-2001, disbanded

Record Group 4: Photographs and Scrapbooks, 14.8 linear feet, 36 boxes

Contains archival photographs dated to the present of The Herb Society of America, including those that may have originated in other record groups. Also contains scrapbooks relating to Record Group 1, the national organization. Arranged by subject and/or by date. When necessary for condition, scrapbooks have been placed in folders. (See RG 8, 1.2, Box 8 for Slide lecture scripts). This record group also contains a limited grouping of audio-visual and audio material—VHS tapes, DVD discs, and audiocassettes of organization activities and presentations.

Record Group 5: Publications, 39.25 linear feet, 89 boxes

Consists of HSA publications from 1935 to the present. Also includes some non-HSA publications with an herbal interest. As a sub-group, this record group also contains news clippings

and periodical articles relating to the HSA or HSA members; also articles written by HSA members. Includes tributes and obituaries. Includes miscellaneous correspondence and documentation regarding publications, author releases, and copyright. Copies of HSA Annual reports from 2003- are printed and saved here in b&w. Full color, born digital copies are saved to the institutional network hard drive.

Record Group 6: Artifacts and Memorabilia, 5.5 linear feet, 18 boxes

Contains collectibles (cards, charts, postcards, prints, etc.) HSA and non-HSA related. Also contains artifacts (3-dimensional objects).

Record Group 7: Oversize Materials and Artwork, 2.5 linear feet, 4 boxes

Consists of site plans, maps, artwork, and other oversize materials that require separate storage. In 2020 arts was wrapped and labelled for preservation.

Record Group 8: National Organization, 1989 - , 28 linear feet, 46 boxes

Board of Directors Meetings, presidential papers, bylaws, tax returns, operating manuals. Headquarters search, committee work, funding, clippings, Kirtland, Ohio building purchase, remodel and dedication. RG 8, 1.2 contained significant documentation on development of the library and archive and the rare book collection.

Series 1.1 Administrative, 1989-

Series 1.2 Education and Research, 1989-

Series 1.3 Growth and Development, 1989-

Series 1.4 Awards and Recognition, 1989-

Record Group 9: Personal Papers, 3.25 linear feet, 9 boxes

Contains correspondence, research notes and other materials from the records of prominent members, which reflect on their HSA activities and other herb-related interests.

Record Group 10: Ephemera, 2 linear feet, 3 boxes

Contains cards, postcards, printed broadsides, and advertisements from vendors, partners, or HAS members that have an herb-related interest—many with great visual appeal.

Record Group 1: National Organization

Series 1.1: Administrative

<u>Box</u>	<u>Folder</u>	
1	1	Executive Board Directories, 1953-1983
	1.2	Executive Board Meetings, 1933-1949 (photocopies mostly)
	2	_____, 1943-1949 Minutes
	3	_____, 1950
	3.1	_____, 1951-1952
	4	_____, 1953
	5	_____, 1954-1957
	6	_____, 1958-1959
	7	_____, 1960-1961
	8	_____, 1962-1963
	9	_____, 1964
	10	_____, 1965
	11	_____, 1966
	12	_____, 1967
	13	_____, 1968
	14	_____, 1969
	15	_____, 1970
	16	_____, 1971
	17	_____, 1972
	18	_____, 1973
	19	_____, 1974
	20	_____, 1975
1.1	1	Executive Board Meeting Minutes, 1976
	2	_____, 1977
	3	_____, 1978
	4	_____, Jan-Jun 1979
	5	_____, Jul-Dec 1979
	6	_____, 1980
	7	_____, 1981
	8	_____, 1982
	9	_____, 1982-1984 Minutes Redelmeir
	10	_____, Unit Reports Oct 1982
	11	_____, Feb 1983
	12	_____, Jun 1983
	13	_____, Oct 1983
	14	_____, Feb 1984
	15	_____, May 1984
1.2		Executive Board Meeting Minutes, Oct 1984
	16	_____, Oct 1984
	17	_____, Feb 1985
	18	_____, Oct 1985
	19	_____, Mar 1986 – misc. reports
	20	_____, Mar 1986 – minutes

- 21 _____, Jun-Oct 1986
- 22 Executive Board Meetings, Mar 1987

Record Group 1: National Organization

Series 1.1: Administrative (cont'd)

Box Folder

- 1.1 23 Executive Board Meetings, Jun-Oct 1987
- 24 _____, Mar 1988

- 2 14.1 Executive Board Meetings, Oct 1988
- 20 Job Analysis, c. 1950s-1960s
- 21 Nominating Committee, 1953-1969
- 22 _____, 1972-1976
- 23 _____, (G. Jyurovat file), 1974-1976

- 2.1 1 Clarification of Aims, July 1978
- 2 Handbook for Executive Board, 1964-1974
- 3 _____, c. 1970s-1980s
- 4 _____, 1984
- 5 Agendas Executive Board Meetings, 1976-1981

- 3 1 Annual Meetings (Invitations & Programs), 1947-1965
- 4 Annual Meeting, New York City, 1954, Board Reports & Conference
- 5 _____, Lost Angeles, 1955
- 6 _____, Gatlinburg, 1956
- 7 _____, Annual Meeting, Philadelphia, 1957
- 8 _____, Berkeley, 1958
- 9 _____, Cape Cod, 1959
- 10 _____, Cleveland, 1960
- 11 _____, Garden City, 1961
- 12 _____, Washington, 1962
- 13 _____, Pasadena, 1963
- 14 _____, Stratford, 1964
- 15 _____, Charlottesville, 1965

- 3.1 Annual Meetings (cont'd), 1966-1980
- 1 _____, St. David's, 1966
- 2 _____, Pittsburgh, 1967
- 3 _____, Berkeley, 1968
- 4 _____, Washington, 1969
- 5 _____, Cleveland, 1970
- 6 _____, Tarrytown, 1971
- 7 _____, Newton, 1972
- 8 _____, Pasadena, 1973
- 9 _____, Dearborn, 1974
- 10 _____, Milwaukee, 1975
- 11 _____, Philadelphia, 1976
- 12 _____, Hartford, 1977

- 13 _____, Toronto, 1978
- 14 _____, Little Rock, 1979
- 15 _____, Spring Lake, 1980
- 4 Annual Meetings (cont'd), 1981-1988
 - 1 _____, Houston, 1981
 - 2 _____, Pittsburgh, 1982
 - 3 _____, Boston, 1983
 - 4 _____, Berkeley, 1984
 - 5 _____, Berkeley, 1984
 - 6 _____, Arlington, 1985
 - 7 _____, Cleveland, 1986
 - 8 _____, Nashville, 1987
 - 9 _____, Nashville, 1987
 - 10 _____, Nashville, 1987
 - 11 _____, Milwaukee, 1988
- 5
 - 1 _____, Treasurer's Corresp.(Sally Thwing & Patch),1962-1965
 - 2 _____, Budget & Finance, Receipts & Invoices, 1964-1966
 - 3 _____, Budget & Finance Officer Expense, 1964-1966
 - 4 _____, Statements, 1964-1965
 - 5 _____, Treasurer's worksheets 1964-1966
 - 6 _____, Statements, 1965-1966
 - 7 _____, Statements, 1966
 - 8 _____, Treasurer's Correspondence (Sally Thwing), 1964-1984
 - 9 _____, Treasurer's Correspondence (Sally Thwing), 1966-1980
 - 10 _____, Statements, 1967
 - 11 _____, Correspondence & Reports, 1967-1978
 - 12 _____, Statements, 1968
 - 13 _____, Statements, 1969
 - 14 _____, Statements, 1970
 - 15 _____, Deposits, 1970-1972, Ledger 1971-1973
 - 16 _____, Financials, 1973-1974
 - 17 _____, Ledgers, Bank Statements, Savings, 1973-1975
 - 18 _____, G. Jyurovat File, 1972-1977
- 5.1
 - _____ , Ledger 1973-1978
 - 19 _____, Deposits, Statements, 1975-1977
 - 20 _____, Financial Reports, Banking, 1975-1977
 - 21 _____, Ledger 1976-1977
 - 22 _____, Quarterly Reports, Petty Cash 1976-1979
 - 22.1 _____, Correspondence & Reports, 1976-1980
 - 23 _____, Treasurer's Monthly Statements
 - 24 _____, Financials, 1978-81
 - 25 _____, Budget and Finance, 1982-1985
 - 26 _____, Financials, 1986-1988
- 5.2 Budget, Finance, and Personnel Development
 - 1 Endowments and Estate Giving, Behest, Baker, 1985

- 2 Endowments and Estate Giving, Behest, Batchelder, 1973
- 3 Endowments and Estate Giving, Benefactors, 1963
- 4 Endowments and Estate Giving, Correspondence, 1986
- 5 Endowments and Estate Giving, General Correspondence, 1974-1990 (notebook)
- 6 Financial Reports and Correspondence, 1980-1989
- 7 Personnel development, Maternity Leave plan, 1986

5.5 MISSING

- 1 _____, General File, 1967-1976
- 2 _____, General File, 1976-1989
- 3 _____, Monthly Deposits, 1978-1980
- 4 _____, Income & Expense Report, 1980-1981

- 5 _____, Financials, CPA 1981-1982
- 6 _____, Balance Sheet Income 1981-1982
- 7 _____, Financial Misc 1981-1982
- 8 _____, Scudder 1979-1984
- 9 _____, Financials, CPA 1982-1986
- 10 _____, Ledger, 1983-1984
- 11 _____, Correspondence & Reports, 1983-1988
- 12 _____, Budgeting 1988-1989

6 (flat) Budget & Finance, Account Book, 1971-72; Journal, 1969-1976; 1966 audit: Payroll Book, 1983

- 7 1 General Correspondence, A-B, 1964-1982
- 2 _____, C, 1964-1975
- 3 _____, C, 1975-1978
- 4 General Correspondence, C, 1979-1983
- 5 _____, D, 1970-1977
- 6 _____, D, 1978-1982
- 7 _____, E, 1967-1982
- 8 _____, F, 1966-1982
- 9 _____, G, 1965-1978
- 10 _____, G, 1979-1982
- 11 _____, H, 1965-1976
- 12 _____, H, 1977-1982
- 13 _____, I-J, 1968-1982
- 14 _____, K, 1965-1982
- 15 _____, L, 1959-1975
- 16 _____, L, 1976-1983
- 17 _____, M, 1963-1983
- 18 _____, Mc, 1961-1982
- 19 _____, N-O, 1959-1982
- 20 _____, P-Q, 1961-1980
- 21 _____, R, 1963-1982
- 22 _____, S, 1969-1974
- 23 _____, S, 1972-1977

- 24 _____, S, 1978-1983
 25 _____, T, 1960-1982
 26 _____, U-V, 1960-1982
- 8 1 _____, W, 1957-1975
 2 _____, W, 1975-1983
 3 _____, XYZ, 1975-1982
 4 _____, Corresponding Secretary, 1960-1970
 5 _____, Corresponding Secretary, 1961-1978
 6 _____, Executive Secretary, 1941-1983
 7 _____, Executive Secretary, 1976-1978
 8 _____, Executive Secretary, 1983-1988
 9 Misc. Member Correspondences, 1952-1988
- 9 1 Presidents Series, Correspondence with Mrs. Oliver Capen
 (Pres. 1948-1950), 1957-1970
 2 _____, Hester Crawford (1950-52)
 3 _____, Mrs. Robert Price (1952-54)
 4 _____, Mrs. Sargent Wellman (1954-56)
 5 _____, Mrs. Sargent Wellman (1954-56)
 6 _____, Edna Cashmore (1964-66), Correspondence 1948-80
 7 _____, Edna Cashmore (1964-66), Correspondence 1947-80
 8 Presidents Series, Edna Cashmore (1964-66), Miscellany
 9
 10 _____, Mrs. Jonathon Jones (1966-68)
 11 _____, Sue Handy (1968-70)
 12 _____, Mrs. Daniel Core (1970-72) (contains later
 Clippings & memoir from 1991)
 12a _____, Mrs. Daniel Core (1970-72) 1970-94
 13 _____, Mrs. Fitzhugh Rollins (1972-74) 1964-95
 14 _____, Mrs. Andrew Jyurovat (1974-76)
 15 _____, Mrs. Andrew Jyurovat (1974-76), Corresp. 1972-76
 16 _____, Mrs. Andrew Jyurovat (1974-76), Officer Corr. 1973-76
 17 _____, Mrs. Andrew Jyurovat (1974-76), Gen. Corr. 1973-77
 18 _____, Mrs. Andrew Jyurovat (1974-76), Misc. 1973-92
 19 _____, Mrs. Jyurovat (1974-76), Past Presidents 1972-76
 20 _____, Mrs. Andrew Jyurovat (1974-76), Horticultural Societies
 21 _____, Mrs. Andrew Jyurovat (1974-76) Administrative
 22 _____, Mrs. Edward Rea (1976-78)
 23 _____, Mrs. Edward Rea (1976-78)
 24 _____, Eleanor Gambée (1978-80) Biographical
 25 _____, Eleanor Gambée (1978-2000)
 25.1 _____, Joanna Reed (1980-82)
 26 _____, Mrs. Pattison Sprague (1984-86)
 27 _____, Mrs. James P. Hill (1986-88)
- 9.1 N/A Presidents Series, Notebooks:
 Mrs. Hollis Webster's Record Book, 1946-48

Presidents' Reports (Compendium), 1950-74
Presidents' Reports (Compendium), 1979-90
Madeline Hill (1986-88) End of collection oversize (moved to RG 4 Box3)
Elizabeth Rea 1976-78

- 9.15 1 President's file, Elizabeth Dibble Rollins, awards
2 _____, Bibliography/Reading List
3 _____, Board Meetings
4 _____, Misc. Correspondence
5 _____, Executive Sect. Correspondence
6 _____, Headquarters Search
7 _____, Dover, Herbarist Anthology
8 _____, Herbarist
9 _____, Library
10 _____, Marketing of Herbs
11 _____, Membership
12 _____, Misc.
13 _____, National Herb Garden
14 _____, Newsletter Correspondence
15 _____, Pins/Past President
- 9.18 1 President's File, Madalene Hill archives
1.5 _____, Archives Dedication
2 _____, Articles, programs, speeches, 1987-95
3 _____, Budget/Finance/Endowment
4 _____, Edna Cashmore Correspondence
5 _____, Leila Compton Correspondence
6 _____, Helen Darrah Correspondence
7 _____, Lane Furneaux Correspondence 1987-92
8 _____, Lane Furneaux Correspondence 1980-86
9 _____, Eleanor Gambee Correspondence
10 _____, Dorothy Bovee Jones Correspondence
11 _____, Priscilla Lord Correspondence
12 _____, Betty Morss Correspondence
13 President's File, Madalene Hill Correspondence with Emily Trueblood
14 _____, Donations
15 _____, Electronic Education Comm
16 _____, Endowment & Development 1972-90
17 _____, Endowment/Finance 1990-94
18 _____, Executive Handbook
19 _____, Five-year Plan, 1988-95
20 _____, Herbarist
21 _____, Lecture & Slide Comm
22 _____, Membership
23 _____, Misc. Correspondence 1952-73
24 _____
25 _____, Misc. Correspondence 1973-86
26 _____, Misc. Correspondence 1987-96
27 _____, Nominating Comm

- 28 _____, Planning Comm
- 29 _____, Round Robins
- 30 _____, Rosemary Circle

- 31 _____, Scholarship Comm 1973-89
- 32 _____, South Texas Unit founding
- 33 _____, Library Comm
- 34 _____, Helen Darrah
- 35 _____, Library Feasibility Study
- 36 _____, Library Feasibility Study 2
- 37 _____, Vision 2000

9.2 Presidents' Biographical Information

- 1 _____, Burrage, Anne Bell Shirk 1933-34
- 2 _____, Cole, Adeline P 1934-35
- 3 _____, Anderson, Dr. Edgar 1935-36
- 4 _____, Cunningham, Theresa 1936-46
- 5 _____, Webster, Helen Noyes 1946-48
- 6 _____, Capen, Noreen Sheridan 1948-1950
- 7 _____, Crawford, Hester M. 1950-52
- 8 _____, Price, Frances Ellis 1952-54
- 9 _____, Wellman, Mary Lines 1954-56
- 10 _____, Stephens, Helen Skeel 1956-58
- 11 _____, Davis, Florence Follwell 1958-60
- 12 _____, Ritchie, Wanda M. 1960-62
- 13 _____, Atherton, Eloise Wicks 1962-64
- 14 _____, Cashmore, Edna Horton 1964-66
- 15 _____, Jones, Dorothy Bovee 1966-68
- 16 _____, Handy, Susan Westcott 1968-70
- 17 _____, Core, Amy 1970-72
- 18 _____, Rollins, Elizabeth Dibble 1972-74
- 19 _____, Jyurovat, Genevieve Gleason 1974-76
- 20 _____, Rea, Betty 1976-78
- 21 _____, Gambee, Eleanor B. 1978-80
- 22 _____, Reed, Joanna McQuail 1980-82
- 23 _____, Bryce, Elizabeth M. 1982-84
- 24 _____, Sprague, Wilhelmina 1984-86
- 25 _____, Hill, Madalene 1986-88

- 10 1 Legal, Misc. Tax Information, 1956=80
- 2 _____, Commonwealth of Massachusetts, 1962-78
- 3 _____, Reincorporation, 1989
- 4 _____, Tax Exemption Material, 1953-88
- 5 _____, Seal, Copyright Information, 1985
- 6 _____, National Herb Garden Agreement, 1976
- 7 _____, Estates, Noreen Capen, 1971-78
- 8 _____, Estates, Dorothy Mae Baker, 1978-83

- 9 _____, Estates, M. Russell, E. Farwell, M. Slade,
E. Abel, M. Stearns, M. Sample 1970-78
- 10 _____, Miscellany, 1972, 1984
- 11 _____, Misc. bequests 1985-89
- 10.5 Tax Returns, None available prior to 1952, Missing 1954, 1985
- 1 _____, Tax Returns, 1953
- 2 _____, Tax Returns, 1955
- 3 _____, Tax Returns, 1956
- 4 _____, Tax Returns, 1957
- 5 _____, Tax Returns, 1958
- 6 _____, Tax Returns, 1959
- 7 _____, Tax Returns, 1960
- 8 _____, Tax Returns, 1961
- 9 _____, Tax Returns, 1962
- 10 _____, Tax Returns, 1963
- 11 _____, Tax Returns, 1964
- 12 _____, Tax Returns, 1965
- 13 _____, Tax Returns, 1966
- 14 _____, Tax Returns, 1967
- 15 _____, Tax Returns, 1968
- 16 _____, Tax Returns, 1969
- 17 _____, Tax Returns, 1970
- 18 _____, Tax Returns, 1971
- 19 _____, Tax Returns, 1972
- 20 _____, Tax Returns, 1973
- 21 _____, Tax Returns, 1974
- 22 _____, Tax Returns, 1975
- 23 _____, Tax Returns, 1976
- 24 _____, Tax Returns, 1977
- 25 _____, Tax Returns, 1978
- 26 _____, Tax Returns, 1979
- 27 _____, Tax Returns, 1980
- 28 _____, Tax Returns, 1981
- 29 _____, Tax Returns, 1982
- 30 _____, Tax Returns, 1983
- 31 _____, Tax Returns, 1984
- 32 _____, Tax Returns, 1986
- 33 _____, Tax Returns, 1987
- 34 _____, Audits 1958-76
- 35 _____, Audits 1977-83
- 36 _____, Audits 1984-86

R. G. 1: National Organization

Series 1.2: Education & Research

<u>Box</u>	<u>Folder</u>	
11	1	Lecture Committee, (Lectures & Slides), 1956-83
	2	Lecture Committee, (Lectures & Slides), 1976-87
	3	_____, (Lectures & Slides), 1986-88
	4	_____, (Lectures & Slides), E. Gambee File, 1978-80
	5	Botany & Horticulture Committee, 1962-88
	6	Bibliography Committee, 1937-62
	7	Bibliography Committee, 1963-86 (Includes Reading Lists)
	8	_____, Individual Members, (Schultes, Youngken, Howard, Williams)
	9	_____, G. Jyurovat File, 1973-76
	10	_____, E. Gambee File, 1970-80
	11	Scholarship Fund Committee, 1964-89 (renamed Education & Research 1989)
	12	_____, 1972-86
	13	_____, 1985-88
	13.1	_____, A. Core File, 1966-70
	14	Monographs/Herb Topics
	15	
	16	Archives/History 1977-
	16.1	History Committee, History (P. Lord Draft), 1983
	16.2	_____, History (P. Lord Draft), 1983
	17	Herb Exhibits & Judging, 1949-
	18	Library, 1972-76
	19	Gardens for the Blind
	20	Checklist of Herbs, 1956
	21	Education & Research, Misc.
	22	Slide Lectures (Texts), 1951-1959
	23	_____, Herb Garden Design, 1956
	24	_____, Design in the Herb Garden, 1950s
	25	_____, Growing Herbs for Winter Enjoyment, 1950s
11.1		Library & Archives History and Correspondence, including information on collection development
	1	Records and correspondence, n.d.
	2	Records and correspondence, 1933-1939
	3	Records and correspondence, 1940-1949
	4	Records and correspondence, 1950-1959
	5	Records and correspondence, 1960-1969
	6	Records and correspondence, 1970-1979
	7	Records and correspondence, 1980
	8	Records and correspondence, 1981
	9	Records and correspondence, 1982
	10	Records and correspondence, 1983
	11	Records and correspondence, 1984
	12	Records and correspondence, 1985
	13	Records and correspondence, 1986
	14	Records and correspondence, 1987

- 12 1 Research Grants, List of Grant Recipients, 1970
 2 _____, Grant Reports, 1970-78
 3 _____, Grant Reports, 1980, Dargan
 4 _____, Grant Reports, 1981-85
 5 _____, Grant Reports, 1986, Debra Kirkpatrick
 6 _____, Grant Reports, 1987, Moody & Bonness
 7 _____, Grant Reports, 1988, Geraldine A. Laufer
 8 _____, Grant Reports, 1988, Renee Murray
- 13(flat) Grant Recipient Research, "Herbs in the Renaissance. Depictions of St. Sebastian,"
 1985 (including photos) by Joan G. Caldwell, 1984-9185
- 14 Travel and Tours
 1 Greece Tour, 1976-77
 2 Switzerland Tour, 1989
 3 England Tour, 1986
 4 England Tour, Administrative Notebook, 1989
 5 New Zealand, Tour 2003
- 15 (flat) Slater Mill Exhibit 1969 (in honor of Susan Handy, includes clips & slides)
- 16 1 Publicity, Miscellaneous, 1986-87, [2001]
 2 Uses of Herbs, Committee, 1958
 3 Ways & Means Committee, Creation, 1960
 4 _____, Miscellaneous, 1971-79
 5 _____, G. Jyurovat file, 1973-76
 6 _____, Miscellaneous, 1980-87
 7 Publication Committee, History
 8 _____, 1958-75
 9 _____, 1976-88
 10 Newsletter, Miscellaneous, 1963-85
 11 _____, G. Jyurovat file, 1974-76
 12 _____, Copyright, 1985-86
 13 Publications, G. Jyurovat file (including *Garden Design* booklet & *Herb
 Sampler Cookbook*), 1974-76
 14 *The Beginner's Herb Garden*, 1986
 15 *The Herb Buyers Guide*, 1983 (1945-73 see R. G. 5 Ser. 5 box 2)
 16 *Judging Herbs*, 1985
 17 *The Herbarist*, Copperplates, 1975
 18 _____, Copyright, 1942-85
 19 _____, Copyright, 1984-86
 19.1 _____, ISSN, 1983 (L. Rascan file)
 20 _____, G. Jyurovat file, 1974-76
 21 *The Herbarist*, Advertising Campaign, 1952
 22 *The Herbarist*, Advertising, 1972-74
 23 _____, Advertising, 1975-79
 24 _____, Advertising, 1980-87
 25 _____, General, 1935

- 26 _____, General, 1968-75
- 27 _____, General, 1976-83
- 28 _____, General, 1983-85
- 29 _____, General, 1986-87
- 30 _____, "Old Material", undated
- 31 _____, E. Gambee file, 1978-80
- 32 Publications, Misc.
- 33 Judging Herbs Handbook, original material, correspondence, 1985
- 34 Judging Herbs Handbooks, original material, correspondence, 1985
- 35 Primer for Herb Growing (for the blind)

17 Traveler's Guide – Research

- 1 Traveler's Guide correspondence and copyright documents, 1988
- 2 Traveler's Guide documents, 1988, Introduction
- 3 Traveler's Guide documents, 1988, Alabama
- 4 Traveler's Guide documents, 1988, Alaska
- 5 Traveler's Guide documents, 1988, Arizona
- 6 Traveler's Guide documents, 1988, Arkansas
- 7 Traveler's Guide documents, 1988, California
- 8 Traveler's Guide documents, 1988, Colorado
- 9 Traveler's Guide documents, 1988, Connecticut
- 10 Traveler's Guide documents, 1988, Delaware
- 11 Traveler's Guide documents, 1988, Florida
- 12 Traveler's Guide documents, 1988, Georgia
- 13 Traveler's Guide documents, 1988, Hawaii
- 14 Traveler's Guide documents, 1988, Idaho
- 15 Traveler's Guide documents, 1988, Indiana
- 16 Traveler's Guide documents, 1988, Illinois
- 17 Traveler's Guide documents, 1988, Iowa
- 18 Traveler's Guide documents, 1988, Kansas
- 19 Traveler's Guide documents, 1988, Louisiana
- 20 Traveler's Guide documents, 1988, Maine
- 21 Traveler's Guide documents, 1988, Massachusetts
- 22 Traveler's Guide documents, 1988, Maryland
- 23 Traveler's Guide documents, 1988, Michigan
- 24 Traveler's Guide documents, 1988, Minnesota
- 25 Traveler's Guide documents, 1988, Mississippi
- 26 Traveler's Guide documents, 1988, Missouri
- 27 Traveler's Guide documents, 1988, Montana
- 28 Traveler's Guide documents, 1988, Nebraska
- 29 Traveler's Guide documents, 1988, New Hampshire
- 30 Traveler's Guide documents, 1988, Nevada
- 31 Traveler's Guide documents, 1988, New Jersey
- 32 Traveler's Guide documents, 1988, New Mexico
- 33 Traveler's Guide documents, 1988, New York
- 34 Traveler's Guide documents, 1988, North Carolina
- 35 Traveler's Guide documents, 1988, North Dakota

- 36 Traveler's Guide documents, 1988, Ohio
 - 37 Traveler's Guide documents, 1988, Oklahoma
 - 38 Traveler's Guide documents, 1988, Oregon
 - 39 Traveler's Guide documents, 1988, Pennsylvania
 - 40 Traveler's Guide documents, 1988, Rhode Island
 - 41 Traveler's Guide documents, 1988, South Carolina
 - 42 Traveler's Guide documents, 1988, South Dakota
 - 43 Traveler's Guide documents, 1988, Texas
 - 44 Traveler's Guide documents, 1988, Utah
 - 45 Traveler's Guide documents, 1988, Vermont
 - 46 Traveler's Guide documents, 1988, Virginia
 - 47 Traveler's Guide documents, 1988, Washington
 - 48 Traveler's Guide documents, 1988, West Virginia
 - 49 Traveler's Guide documents, 1988, Wisconsin
 - 50 Traveler's Guide documents, 1988, Wyoming
 - 51 Traveler's Guide documents, 1988, Canada
 - 52 Traveler's Guide documents, 1988, Illustrations
 - 53 Traveler's Guide documents, 1988, Additions and corrections
-
- 17.1 Herb Garden Locator: Basket of Herbs
 - 1 Draft of A Basket of Herbs, illustrated by Tasha Tudor
 - 2 Draft two, A Basket of Herbs, illustrated by Tasha Tudor
 - 3 Herb Garden Locator information
 - 4 Herb Garden Locator, mimeograph

 - 17.2 Card Index – herb names, undated

 - 17.3 Quilt Squares Project, 1982
 - 1 Quilt squares suggestions by unit
 - 2 Quilt squares designed and drawings

 - 18
 - 1 National Herb Garden, Finance Committee, 1966-75
 - 2 _____, Finance Committee, 1976-77
 - 3 _____, Edna Cashmore file, 1968-79
 - 4 _____, Miscellaneous Expenses, 1974-76, 1985
 - 5 _____, Campaign, NHG Fund, 1974-79
 - 6 _____, Campaign, 1974-76
 - 7 _____, NHG Fund, 1985
 - 8 _____, E. Gambee file, 1977-79
 - 9 _____, Proposals
 - 10 _____, G. Jyurovat file, Groundbreaking, 1976
 - 11 _____, G. Jyurovat file, Foundations
 - 12 _____, G. Jyurovat file, material sent to P. Lord, 1976
 - 13 _____, G. Jyurovat file, Fundraising firms, 1975-76
 - 14 _____, G. Jyurovat file, Campaign, 1974-76
 - 15 _____, G. Jyurovat file, Member solicitations, 1974
 - 16 _____, G. Jyurovat file, National Arboretum, 1974-75

- 17 _____, G. Jyurovat file, Miscellaneous, 1975-76
 18 _____, G. Jyurovat file, Correspondence with Betty Morss, 1975-76
 19 _____, G. Jyurovat file, Corr with William Kramer (Legal), 1975
 20 _____, G. Jyurovat file, Corr with William Kramer (Legal), 1975-76
 21 _____, G. Jyurovat file, Corr with Elsetta Barnes, 1974-75
 22 _____, G. Jyurovat file, Corr with American Bicentennial
 Administration, 1974-76
 23 _____, G. Jyurovat file, Corr with Edna Cashmore, 1973-74
 24 _____, G. Jyurovat file, Corr with Edna Cashmore, 1975-76
 25 _____, G Jyurovat file, Corr with Cadwalader, O'Connor,
 Patch, Paxton, Rimmel
 25.5 _____, G. Jyurovat Correspondence with Doris Frost
 26 _____, Misc., Rimmel Campaign
 27 _____, R. Rimmel file, Fundraising, 1976-79
 28 _____, R. Rimmel file, member donations, 1976-79
- 19.1 1 National Herb Garden, Misc, 1967-79
 2 _____, Katherine Patch file, Finance, 1973-75
 3 _____, Katherine Patch file, 1973-75
 4 _____, Katherine Patch file, 1973-75
 5 _____, Dedication of Columns, 1990, includes audio tape
 6 _____, Madalene Hill file, 1985-88
 7 _____, Minutes & Reports, 1983-91
 8 _____, White House Invitation (to Betty Rae), 1984
 9 _____, Cadwalader file, Committee reports
 10 _____, Cadwalader Correspondence, 1976-80
 11 _____, Correspondence, undated
 12 _____, Donations, benches
 13 _____, Donations, lists
 14 _____, Fundraising
 15 _____, Ledger
 16 _____, NHG Fund
 17 _____, News clippings
 18 _____, Photographs
 19 _____, Plant Data sheets
 20 _____, Plant Lists
 21 _____, Plant Research
 22 _____, Proposals
 23 _____, Sasaki Correspondence
 24 _____, Sasaki Invoices
 25 _____, Taxes, checks
 26 _____, Research
- 19.1 1 NHG , Miscellaneous, R. Rimmel Campaign, 1974-79
 2 _____, R. Rimmel file, Fundraising, 1976-79
 3 _____, R. Rimmel file, Member donations, 1976-79
 4 _____, Garden Progress, work plans, 1977

20 (flat) NHG, Brochures, Programs, etc

21 (flat) NHG, Drawings

R. G. 1: National Organization

Series 1.3: Growth & Development

<u>Box</u>	<u>Folder</u>	
22	1	Committee on Organizational Planning, 1984-85
	2	Directions & Planning Committee, G. Jyurovat File, 1975-76
	3	Endowment Fund, 1962-72
	4	_____, 1970-74
	5	_____, 1968-75
	6	Membership Cards, 1965
	7	_____, Dues (Units), 1983-88
	8	_____, Dues (Units), 1987
	9	_____, Dues (MAL), 1985
	10	_____, Dues (MAL), 1986-87
	11	_____, G. Jyurovat File, 1972-76
	12	_____, E. Gambee File, 1976-80
	13	_____, Miscellaneous, 1976-88
	14	_____, New Units, 1955-60
	15	_____, New Units, 1972-88
	16	_____, Types of Membership, 1962-63
	17	_____, Lists, 1957, 1959, 1986
	18	_____, Resignations, 1967-83
	19	_____, Life Memberships, 1962-74
	20	_____, Life Memberships, 1975-85
	21	_____, Life Memberships, 1984-89
	22	_____, MAL (E. Gambee File), 1976-80
	23	_____, MAL Study Committee (Betty Rae File), 1975-77
	24	_____, Past President Pins, 1974-78
	25	Membership, Junior Groups, 1968
	26	_____, Rotation Plans, 1962-84
	27	_____, Information & Forms for Membership, 1972-84
	28	History of HAS Development, n.d.
23.1		Outside Inquiries, 1982-1983
23.2		Outside Inquiries, 1986
23.3		Outside Inquiries, 1988
24	1	Headquarters Exhibit captions, 1988
	2	Headquarters Exhibit guestbook, 1988

R.G.1: National Organization

Series 1.4: Awards & Recognition

Box **Folder**

24	Award of Merit	
1	Williams, Frances Ropes	1952
2	Stearns, Martha Genung	1953
3	Cole, Adeline P.	1953
4	Van Brunt, Elizabeth Remsen	1954
5	Anderson, Dr. Edgar	1954
6	Merrill, Dr. Elmer D.	1955
7	Dawes, Carlos Burr	1983

Medal of Honor

8	Neugebauer, Edna K.	????
9	Harding, Madeleine	1957
10	Jones, Dorothy Bovee	1958
11	Brigham, Dorcas	1959
12	Capen, Noreen Sheriden	1960
13	Hunt, Rachel McMasters	1961
14	Farwell, Edith Foster	1962
15	Crawford, Hester Taylor	1963
16	Wellman, Mary Lines	1964
17	Schetky, Etheljane McD.	1965

Helen de Conway Little Medal of Honor

18	Olive Willett	1966
19	Price, Frances Ellis	1967
20	Cashmore, Edna Horton	1968
21	Duerr, Sidney Robert	1969
22	Rollins, Elizabeth Dibble	1970
23	Ferguson, Mildred Pfau	1971
24	Davis, Florence Fallwell	1972
25	Barnes, Elsetta Gilchrist	1973
26	Whitman, Helen M.	1974
27	Foster, Gertrude Bates	1975
28	Handy, Susan Westcott	1976
29	Muencher, Minnie Worthen	1977
30	Hill, Madalene	1978
31	Rea, Elizabeth Crisp	1979
32	O'Connor, Audrey H.	1980
33	Cadwalader, Caroline	1981
34	Neff, Nelle	1982
35	Lord, Priscilla Sawyer	1983
36	Reed, Joanna McQuail	1984
37	Swanson, Faith & Virginia B. Rady	1985
38	Sister Mary Margaret	1986
39	Stevens, Betty Hippler	1988

Nancy Putnam Howard Award, Shimizu, winners

A1	Holly Harmar	1986
----	--------------	------

A2	Rollins, Elizabeth Dibble	1987
A3	Oberliesen, Janet	1988

24.1 Certificate Winners

D1	Trueblood, Emily Emmart	1974
D2	Ostheimer, Ruth M.; Reed, Margaret Y.; Simmons, Adelma Grenier; Voight, John E.	1975
D3	Wilkes, Maria L.; Favretti, Rudy J.	1977
D4	Darrah, Helen; Howard, Nancy Putnam	1978
D5	Durell, Jack; Reed, Joanna McQuail	1979
D6	Chaney, Virginia; Langdon, Eustella	1980
D7	Creech, Dr. John; Wrensch, Ruth	1981
D8	Botzow, Elizabeth; Remmel, Roland & Ruth; Worthen, Booker & Mary	1982
D9	Campbell, Mary M.; Geist, Beverly B.; New England Unit; Smith, Isadore L.	1983
D10	Morss, Elisabeth	1984
D11	Hicks, Alexandria H.	1985
D12	Truitt, Henrietta Gould	1986
D13	Canny, Rose; Haskin, Jean W.; Jyurovat, Genevieve G.	1987
D14	Falkenberg, Gloria; Lohmolder, Jo; Remmel, Mary E.; Westlake, Grace J.	1988

E1 Special Award of Honor

Anne Burrage	1981
--------------	------

F1 Stearns Garden Medal

Mittie Arnold	1971
---------------	------

G1	Awards, general information, descriptions
G2	Awards, Helen de Conway Little, description, background
G3	Awards, Nancy Putnam Howard, description, background
G4	Awards, Gertrude B. Foster, description, background
G5	Awards, Joanna McQuail Reed, description, background
G6	Awards, certificates, descriptions, background

25 Awards Committee correspondence

1	1955-60
2	1961-72
3	1973-82
4	1983-88

- 26 1-3 Silver Anniversary Materials
- 4 50 th Anniversary
- 27 Priscilla Sawyer Lord Archives Room Dedication
- 27.1 Rosemary Circle, award correspondence

R.G.1: National Organization

Series 1.5: Early History

Box Folder

- 28 1 Photocopies of miscellaneous Early Records, 1936-39
- 2 Photocopy of Founders Photo
- 6 Letter to Elizabeth W. White from Harriet Brown announcing formation of HSA, 1933
- 8 Bulletin of Garden Club of America, 1936
- 9 Legal Agreement, 1941
- 10 References from “The Green Roads of England”
- 11 Six Monographs Collected by Adeline Cole
- 12 Articles of Incorporation (photocopies), 1935
- 13 Constitution: By-Laws (printed); Nominating Committee, u. d.
- 13.1 Vendor Correspondence, 1935
- 14 Letter from Harriet Brown, 1942
- 16 Invitations Letters of Acceptance, 1935, 1941
- 18 Museum of Fine Art, 1937-40; Metropolitan Museum of Art, 1933
- 19 Poem for Mrs. Cole from Ella Greenslet, n. d.
- 20 Membership List, 1935-37
- 21 Board Minutes, 1934 (copy), 1942
- 22 Foreign Inquiries, 1940s
- 23 Membership Questionnaire, 1936
- 24 Herbal Reference Lists
- 25 Botanic Garden Lists, 1930, 1939
- 26 Article in National Horticulture, 1946
- 27 Internal Correspondence, Miscellaneous
- 28 Outside Inquiries 1938
- 29 Newsletter, By-Laws, 1935
- 30 Annual Meeting, 1935-1941
- 31 Frances (Mrs. Charles) Norton Memorial, 1937
- 32 Notes on History, 1933-42 (photocopies)
- 28.1 Early History, Founders of The Herb Society of America, including biographical information
 - 1 Founders of HSA information, miscellaneous, including narrative from 1956 about the development of HSA
 - 2 Founder, Dr. Edgar Anderson, including “Efforts created the Herb Society” document and photographs of Dr. Anderson Mrs. Sewall Cabot, 1936
 - 3.1 Founder, Harriet Addams Brown, “Righte Dittany” in The Herbarist, 1935, p. 23, with notes laid in, this edition also contains articles by Anderson (“Nature’s Bags of Scent,” p. 5); Cole (“The 17th Century Still-Room,” p. 14); and Greenslet (“A List

- for an Old English Wort Garden,” p. 14); and “The Romance of Kipling’s Dittany” by Edith Coleman, “with the writer’s compliments,” 1941
- 3.2 Founder, Harriet Addams Brown, Herb Recipes: A Publication of the Herb Society of America, 1936
 - 3.3 Founder, Harriet Addams Brown, photographs,
 - Bass Rocks, Gloucester, MA, 1930’s
 - Harriet Addams Brown (in hat), n.d. (2)
 - Harriet Addams Brown (in hat), n.d., negative
 - 3.4 Founder, Harriet Addams Brown, photographs, 7 of domestic herb garden, 1926
 - 3.5 Founder, Harriet Addams Brown, genealogy records, from 2014
 - 3.6 Founder, Harriet Addams Brown, herb related hanky
 - 3.7 Founder, Harriet Addams Brown, Miscellaneous keepsakes and publications
 - 3.8 Founder, Harriet Addams Brown, The Recipe Book of Herbs, by Olive Mills Belches, Boston: Pinkham Press, 1934
 - 3.9 Founder, Harriet Addams Brown, “Selected Herb Recipes: The Woman’s Auxiliary of the Brooklyn Botanical Garden,” Waldorf-Astoria Hotel, November 16, 1936
 - 3.10 Founder, Harriet Addams Brown, “An Herb in the Pot is Worth Two in the Plot,” by Mary Frost Mabon, 1935?
 - 4.1 Founder, Adeline Philbrick Cole, Adeline Philbrick Cole: Her inspiration and devotion to Wenham brought to all wider horizons and better understanding by Jack E. Hauck, 2011
 - 4.2 Founder, Adeline Philbrick Cole, “A history of Adline P. Cole, from 1865 to 1959,” by Jack E. Hauck, n.d.
 - 4.3 Founder, Adeline Philbrick Cole, genealogy records
 - 4.4 Founder, Adeline Philbrick Cole, photographs, n.d.
 - 4.5 Founder, Adeline Philbrick Cole, photographs, digitalis, planting, n.d.
 - 4.6 Founder, Adeline Philbrick Cole, photographs, digitalis, gardening and harvest, n.d.
 - 4.7 Founder, Adeline Philbrick Cole, photographs, garden photographs, nd.
 - 4.8 Founder, Adeline Philbrick Cole, bibliography, glossary, and newsletter on herbs, n.d.
 - 5.1 Founder, Ellen Hulst Greenslet, photographs & negative
 - 5.2 Founder, Ellen Hulst Greenslet, genealogy records
 - 6.1 Founder, Corrina Searle Mitchell, photograph & negative
 - 6.2 Founder, Corrina Searle Mitchell, genealogy records
 - 7.1 Founder, Frances Torrey Norton, photograph & negative, 1936
 - 7.2 Founder, Frances Torrey Norton, genealogy records
 - 7.3 Founder, Frances Torrey Norton, Bradford Academy booklet, 1888
- 28.2 Early History, Founders of The Herb Society of America, Florence Brown Bratenahl
- 1 Founder, Florence Brown Bratenahl, photographs and negative, including portrait, Weathered Oak Herb Farm, and National Cathedral Garden
 - 2 Founder, Florence Brown Bratenahl, genealogy records
 - 3 Founder, Florence Brown Bratenahl, Weathered Oak Herb Farm publications
 - 4 Founder, Florence Brown Bratenahl, National Cathedral Garden publications
 - 5 Founder, Florence Brown Bratenahl, All Hallows Guild scarf, designed by Bratenahl
 - 6 Founder, Florence Brown Bratenahl, All Hallows Guild stationary, designed by Bratenahl

- 7 Founder, Florence Brown Bratenahl, "A night letter"
- 8 Founder, Florence Brown Bratenahl, "Herbs for an herb garden, Braces Cove"
- 28.3 Early History, Founders of The Herb Society of America Greenslet
 Founder, Ellen Hulst Greenslet, *The Nightingale: A Lark, by Ellenor Stoothoff*.
 Boston: Houghton Mifflin Co., 1914.
- 29 Early Records, Commercial Research Committee, 1937-1946
- 1 Correspondence between Dr. Robert Griggs & McKeen Cattell, 1940
 - 2 Report, 1943
 - 3 Adeline Cole's File, Correspondence & Reports, 1937-42
 - 4 Adeline Cole's File, Correspondence & Reports, 1941
 - 5 Adeline Cole's File, Correspondence & Reports, 1941
 - 6 Adeline Cole's File, Correspondence & Reports, Digitalis, 1935-40
 - 7 Adeline Cole's File, Correspondence & Reports, Digitalis, 1941
 - 8 Dept. of Agriculture Correspondence, 1941
 - 9 Adeline Cole's File, Correspondence, Eli Lilly & Co; RT French Co., 1940-41
 - 10 Adeline Cole's File, Correspondence, 1939-42
 - 11 Adeline Cole's File, Correspondence & Reports, Dr. Ladd, 1940-41
 - 12 National Farm Chemurgic Council Bulletin, 1943
 - 13 Miscellaneous, 1936-43
 - 14 Decentralization, 1946
- 30 (Cancelled)
- 31 Early Records, Correspondence of Elizabeth Wade White and Helen Noyes Webster
- 1 Helen (Mrs. Hollis) Noyes Webster, Miscellaneous, 1936-49
 - 2 Correspondence (rec'd 1932-80)
 - 3 Elizabeth Wade White, Oral History, tape, script
 - 4 _____, Corresp. with Harriet (Mrs. Laurence) Brown
 - 5 _____, Corresp. with Adeline (Mrs. Edward) Cole
 - 6 _____, Corresp. with Theresa Cunningham
 - 7 _____, Corresp. with the Fosters
 - 8 _____, Corresp. with Corrina Mitchell and Harriet Brown
 - 9 _____, Corresp. with Rohde
 - 10 _____, Corresp. with Frederic Warde
- 32(flat) Early Records, Correspondence of Frances Williams,
- 1 Correspondence with Rosella Mathieu
 - 2 Papers, 1941-, including bibliography of articles by Frances R. Willaims
 - 3 Pin Cushion (strawberry)
- 33(flat) Early Records, Exhibits, Boston Spring Flower Show, proposals, 1934, 1935, 1936
- 1 Exhibit ribbon and newspaper clipping, n.d.
 - 2 Exhibit booklet and 1935 Massachusetts Horticultural Society Annual Report, 1935,
 with photo of HSA winning exhibit
 - 3 Exhibit correspondence and photos, 1936 Gold Medal Winner

- 4 Exhibit captions, 1936 Gold Medal Winner
- 5 Exhibit design notebook, 1934, 1935, 1936, including drawings, correspondence, and poem to A. Cole

R.G. 2: Members-at-Large

<u>Box</u>	<u>Folder</u>	
1	1	Great Lakes Herb Symposium, Correspondence and documents (w/clips), 1978-83
	2	_____, 1984-88
	3	_____, 1989-93
	3.1	_____, 1996-2000
	4	MAL Chairman, Newsletter, 1963-76
	5	Notebook, 1991 Great Lake Herb Symposium
	6	History, 1974
	7	Symposia Correspondence and documents, 1992
1.5	1	Symposia Correspondence and documents, 1993 pt. 1
	2	Symposia Correspondence and documents, 1993 pt. 2
	3	Regional Chair files, 1995
	4	Regional Chair files, 1996
1.5.1		Symposia Correspondence and documents, 1994-1995
		Symposia Correspondence and documents, 1996
1.5.2		Symposia Correspondence and documents, 1997-
	1	Symposia correspondence and documents, 1997-1999
	2	Symposia correspondence and documents, 2000-2004
	3	Symposia correspondence and documents, 2005-2007
2	1	Miscellaneous (correspondence, membership, etc.), 1961-73
	2	_____, 1974-76
	3	_____, 1977-79
	4	_____, 1980-81
	5	_____, 1982-86
	6	_____, 1987-90
	7	_____, 1991-2004
	8	_____, 2005-
2.1		History and organizational documents
		Regional Plan Correspondence
3(flat)		MAL Newsletters, 1953; 1961-80
3.1(flat)		MAL Newsletters, 1981-1986
4(flat)		MAL Newsletters, 1987-96

R.G. 3: Units

<u>Box</u>	<u>Folder</u>
1	Arkansas
	1 General Correspondence, 1967-85
	2 History, c. 1970s
	2.1 General Correspondence, 1967-
	3 News Clippings, 1968
	4 Headquarters File, 1969-87
	4a Correspondence with Ruth (Mrs. Ralph) Rimmel, 1982
	5 Publications
	6 Newsletters, 1980-
	7 HSA Headquarters File, 1989
	8 2000-
2	Baton Rouge
	1 Newsletters
	2 Research Reports, Publications, 1992-
	3 News Articles, 1994-
	4 New Members Manual, 1996
	5 Miscellaneous
	6 HSA Headquarters File, 1992-
	Binder Application to HSA, 1991
3	Connecticut
	1 Miscellaneous, 1955-56
	1.1 History
	2 1973-87 for history see R. G. 3 Box 46
	3 Programs, 1961-87
	4 Caprilands Herb Farm, n.d.
	5 News Clippings, 1955
	6 Publications
	7 Newsletters, 1977-87
	8 Newsletters, 1988-92
	9 Newsletters, 1993-
3.1	1 HSA Headquarters File, 1988-
	2 Programs
3.2	Miscellaneous publications and programs
3.3	Early Notebooks and Ledgers
3.4	Administrative Files, 1985-2010
3.5	Meeting Minutes and Administrative Files, 2011-2012
4	Delaware Valley
	1 Newsletters, 1984-
	2 Miscellaneous (reports, clippings, membership, etc.) 1982-87

- 3 HSA Headquarters File, 1988-2007
- 4 HSA Headquarters File, 2008-

- 5 Frankenmuth/Mid-Michigan
 - 1 Miscellaneous, 1973
 - 1.1 History
 - 2 Clippings
 - 3 Newsletters, April 1984-June 1990
 - 4 Newsletters, July 1990-August 1992
 - 5 Newsletters, September 1992-June 1995
 - 6 Newsletters, July 1995-November 2000
 - 6.1 Newsletters, January 2001-2007
 - 7 HSA Headquarters File, 1988-
 - 8 Programs

- 5.1
 - 1 Frankenmuth newsletters, 2006-09
 - 2 Frankenmuth newsletters, 2010-

- 6 Grosse Point
 - 1 Misc. 1982 (reports by-laws, activities, membership, etc
 - 2 Clippings
 - 3 Newsletter, 1990-
 - 4 HSA Headquarters File, 1988-
 - 5 Lottie Crawley Memorial Garden, 1993, plus slides
 - 6 History, 1982-
 - 7 Publications, 1994-
 - 8 Children's Home of Detroit Fairy Garden & War Memorial Videos

- 7 Kentuckiana
 - 1 Newsletter, July 1987-
 - 2 Miscellaneous, 1985- (reports, history, membership, etc.)
 - 3 HSA Headquarters File, 1988-
 - 4 Newsclippings

- 8 Long Island
 - 1 Miscellaneous, 1991-
 - 2 Newsletters, 1984-2008
 - 3 Newsletters, 2009-
 - 4 HSA Headquarters File, 1991-

- 9 Nashville
 - 1 Miscellaneous, 1980-88
 - 2 News Clippings, 1984-
 - 3 Publications
 - 4 Newsletters, 1981-96
 - 5 Newsletters, 1997-2004
 - 5.1 Newsletters, 2005-2008
 - 6 HSA Headquarters File, 1988-2005

- 9.1 Nashville con't.
 - 1 Headquarters File, 2006-
 - 2 Newsletters, 2009-

- 10 New England
 - 1 Miscellaneous, 1942-71
 - 2 Miscellaneous, 1972-74
 - 3 Miscellaneous, 1975-79
 - 4 Miscellaneous, 1980-85
 - 5 Miscellaneous, 1986-
 - 5.1 Rosters, 1977-2007
 - 6 News Clipping/Articles, 1959-85
 - 7 Publications (including history), u. d. -1985
 - 7.1 Founders' Garden, Wenham, MA, 1956
 - 8 Newsletters, 1949-83
 - 9 History, 1933-74
 - 10 HSA Miscellaneous, 1988-91
 - 11 HSA Headquarters File, 1989-97
 - 12 HSA Headquarters File, 1998-2006
 - 13 Newsletters, 1981, 1988-97
 - 14 Newsletters, 1998-2006
 - 15 Newsletters, 2007-
 - 16 Miscellaneous, 1988-

Bibliography of publications by NEU members binder; Pilgrim Village binder

- 10.1 Administrative Files, 1998-

- 11 New Orleans
 - 1 HSA Proposal, 1991-
 - 2 News Clippings, 1994-
 - 3 Ursuline Convent Topo map
 - 4 Newsletters, 1993-
 - 5 HSA Headquarters File, 1991-

- 12 New York
 - 1 Miscellaneous, 1939-59
 - 2 Miscellaneous, 1960-69
 - 3 Miscellaneous, 1970-79
 - 4 Miscellaneous, 1980-87
 - 4.1 Miscellaneous, 1988-
 - 5 News Clippings, 1943-77
 - 6 Articles, 1942; 1979
 - 7 Miscellaneous Publications
 - 8 Elizabeth C. Hall, 1988-89 (90th birthday)
[See also R. G. ! Series 1.4 B24 F21]
 - 9 History
 - 10 HSA Headquarters File, 1988-

- 11 Newsletters, 1959-89
- 12 Newsletters, 1990-99
- 13 Newsletters, 2000-
- New York Herbarium Committee's Herb Lists, Medicinal Plants of the Greek Herbal
Dioscorides, Medicinal Plants of the North American Indian
- 12.2 New York Green Bulletin, 1946-58
- 13 Northern New Jersey
 - 1 Headquarters File, 1970-77
 - 2 Miscellaneous, 1980-96
 - 2.2 Headquarters File, 1979-
 - 3 History
 - 4 Henry Wick Garden, 1970
 - 5 Printed Membership Directories, 1974
 - 6 News Clippings, 1957-71
 - 7 Publications (Rosemary Bibliography)
 - 8 Newsletters, 1971-90
- 13.1 Northern New Jersey cont.
 - 1 Newsletters, 1990-93
 - 2 Newsletters, 1994-
- 14 Northern California
 - 1 Miscellaneous, 1949-59 [see also RG3 B. 46 for history]
 - 2 Miscellaneous, 1965-80
 - 3 Miscellaneous, 1981-88
 - 4 Articles & News Clippings, 1952-53
 - 5 Index to Articles, 1938-54
 - 6 California Herbal Cuisine Symposium, 1987
 - 7 Newsletters, 1948-95
 - 7.1 Newsletters, 1996-99
 - 7.2 Newsletters, 2000-
 - 8 HSA Headquarters File, 1989-96
- 15 North Carolina
 - 1 Headquarters File, 1982-88
 - 2 News Clippings, 1989-94
 - 3 Newsletters, 1986, 1989-94
 - 4 Newsletters, 1995-99
 - 4.1 Newsletters, 2000-
 - 5 HSA Headquarters File, 1988-2005
 - 6 HSA Headquarters File, 2006
- 15.1 Meeting Notes and Reports, 1981-1994
- 15.2 Meeting Notes and Reports, 1995-2010

- 15.3 Miscellaneous Correspondence and Reports

- 16 North & Central Texas
 - 1 Miscellaneous, 1989-96
 - 2 Newsletters, 1989-
 - 3 Headquarters File

- 17 Northern Illinois
 - 1 Miscellaneous, 1978-87
 - 2 HSA Headquarters File, 1988-
 - 3 Newsletters, 2005

- 17.1 Northern Illinois
 - Newsletters, 2006-

- 18 Northeast Seacoast
 - 1 Headquarters File, 1986-
 - 2 Newsletters, 1989-90, 1993
 - 3 Newsletters, 1997-
 - 4 Miscellaneous, 1986-

- 19 Pennsylvania Heartland
 - 1 Miscellaneous, 1985-96
 - 2 Yearbooks, 1989-2001, 2002-04, 2007
 - 3 History, 1990, 1994
 - 4 News Clippings
 - 5 Newsletters, 1985-91
 - 6 Newsletters, 1992-94
 - 7 Newsletters, 1995-2002

- 19.1 Pennsylvania Heartland
 - 1 Newsletters, 2003-
 - 2 Miscellaneous, 2002-
 - 3 Headquarters File

- 20 Philadelphia
 - 1 Miscellaneous, 1939-1958, 1962
 - 2 Miscellaneous, 1970-89
 - 2.1 Miscellaneous, 1990-
 - 3 History, 1982, 1990 [see also RG 3 Box 46]
 - 4 Directories, 1957-72, 1984-
 - 5 Publications, 1962, u. d.
 - 6 News Clippings, 1939-85
 - 7 Newsletters, 1990-

- 21 Pioneer
 - 1 News Clippings, 1994-
 - 2 Newsletters, 1994-2000

- 2.1 Newsletters, 2001-2002
 - 2.2 Newsletters, 2003-06
 - 2.3 Newsletters, 2007-08
 - Scrapbook, Binder
 - 3 HSA Headquarters File, 1994-
 - 4 International Festival Institute at Round Top, 2001-
- 21.1 Pioneer
 - Newsletters, 2009-
- 22 Potomac
 - Binder 1 Photograph album with programs, articles, Betty Rea, labeled Potomac National Pres. 1977 Betty Rea 1964-81
 - Binder 2 Labeled photographs of workshops, sales, parties, education, labeled Potomac 1985-86, 1987, Annual meeting 1985
 - Binder 3 Oversized, labeled photos of events, programs, articles, labeled PHSA 1962-76
 - Binder 4 Labeled photographs, articles, programs, herb fairs, garden tours, Labeled 1979-82, 1977-82
 - Binder 5 Miscellaneous clippings, events, 1980-2008, labeled 1980, 1992, 1993, 1995-99, 2007
 - 22.1 Potomac cont.
 - Binder 6 Washington Cathedral Flower Mart, 1967-79, awards, guest books, audio tapes
 - 22.2 Potomac cont.
 - 1 Newsletters, 1979-93
 - 2 Newsletters, 1994-96
 - 3 Newsletters, 1997-99
 - 4 Newsletters, 2000-02
 - 5 Newsletters, 2003-09
 - 6 Newsletters, 2010-
 - 22.3 Potomac cont.
 - 1 Clippings
 - 2 Miscellaneous, 1967-80
 - 3 Miscellaneous, 1981-87
 - 4 Miscellaneous, 1988
 - 5 Miscellaneous, 1989
 - 6 Handbooks, bylaws
 - 7 Directories, 1966-87
 - 8 Directories, 1988
 - 9 Membership, 1968-72
 - 10 Membership, 1973-77
 - 11 Membership, 1978
 - 12 Membership, 1979-80
 - 13 Membership, 1981-84
 - 14 Membership, 1985-86

- 15 Membership, 1987-88
 - 16 Membership, 1989-91
 - 17 Membership, 1992-95
 - 18 Membership, 1996-2000
 - 19 Membership, 2001-05
 - 20 Membership Registration Notebook, 1986-92
 - 21 EdCon 2000
 - 22 History
 - 23 Budgets & Finance
 - 24 Fuch's Project
 - 25 Hort Reports
 - 26 National Herb Garden
 - 27 Meetings
 - 28 Herb Fairs, Plant Sales, Events
 - 29 Social Symposium, 1999
 - 30 Photographs
 - 31 Bead Collection
 - 32 Rose Symposium
 - 33 Publications
 - Binder 2000 Baltimore EdCon
- 22.4 Potomac
- Membership, Miscellaneous, 1996-
- 23 The Potomac Herb Journal, 1965-73
- 24 Southern California
- 1 Miscellaneous, 1959-69 defunct
 - 2 Miscellaneous, 1970-79
 - 3 Miscellaneous, 1980
 - 4 Directories, 1962-85
 - 5 History, 1982 [see also RG 3 B 46)
 - 6 Clippings, 1954-67
 - 7 Newsletters, 1972-84
 - 8 Newsletters, 1988-92
 - 9 Headquarters File, 1959-2002
- 25 Southern California cont.
- 1 Miscellaneous, 1990-
 - 2 Newsletters, 1993-96
 - 3 Newsletters, 1997-
- 26 St. Louis
- 1 Miscellaneous, 1945-54
 - 2 Bulletins, 1950s
 - 3 Mrs. Price's Correspondence, 1954
 - 4 Publications, 1972

- 5 Clippings, 1949-71 [see RG3 B 46 for history]
- Portland, Oregon
- 6 Miscellaneous, 1942-49
- 7 Hoover Historical District, OH Miscellaneous 1994-95

- 27 South Texas
 - 1 Miscellaneous, 1968-79
 - 2 Miscellaneous, 1980-87
 - 3 Miscellaneous, 1988-
 - 4 History, 1967-82
 - 5 Publications
 - 6 Newsletters, 1971, 1982-86
 - 7 Newsletters, 1987-90
 - 8 Newsletters, 1991-92
 - 9 Newsletters, 1993-95
 - 10 Newsletters, July 1995-2000
 - 11 Newsletters, 2001-2006
 - 12 Newsletters, 2007-
 - 13 HSA Headquarters File, 1989-96
 - 14 HSA Headquarters File, 2000
 - 15 Directories and Programs, 1991-

- 28 Vacant

- 29 Southern Michigan
 - 1 Miscellaneous, 1969-79
 - 2 Miscellaneous, 1980-87
 - 3 History, u. d. [see RG 3 B 46]
 - 4 Publications
 - 5 Clippings
 - 6 Newsletters, 1988
 - 7 Headquarters File, 1988-
 - 8 Miscellaneous

- 30 Southern Ontario
 - 1 Miscellaneous, 1968-82 defunct
 - 2 Miscellaneous, 1983-96
 - 3 History, Black Creek Pioneer Garden
 - 4 Publications
 - 5 Newsletters, 1978-81, 1988-95
 - 6 Newsletters, 1996-
 - 7 Headquarters File, 1968-92
 - 8 Headquarters File, 1993-2005 dissolution

- 31 Susquehanna
 - 1 Miscellaneous, 1980-96
 - 2 History, 1982
 - 3 Newsletters, 1990-

- 32 Tampa Bay
 - 1 Newsletters, 1994-2000 defunct
 - 2 HSA Headquarters File, 1994-
 - Binder Notebook-Compendium of Unit's Activities, incl photos, 1993
 - 3 Publications, 196
 - 4 Miscellaneous, 1993-
 - 5 Budget, 1993-99
 - 6 vacant
 - 7 Bylaws
 - 8 Herb Fest
 - 9 Meeting Minutes
 - 10 Articles of Incorporation
 - 11 Finances, 1993-94
 - 12 Finances, 1995
 - 13 Finances, 1996
 - 14 Finances, 1997
 - 15 Finances, 1998
 - 16 Finances, 1999
 - 17 Finances, 2000
 - Sign-in books, audio tapes

- 33 Tidewater
 - 1 Application for Membership
 - 2 Publications, 2001-03
 - 3 Newsletters, 1993-94
 - 3.1 Newsletters, 1995-96
 - 3.2 Newsletters, 1997-2000
 - 3.3 Newsletters, 2001-
 - 4 HSA Headquarters File, 1992-
 - Binder Application to HSA, 1991(2)

- 34 Virginia Commonwealth
 - 1 Miscellaneous, 1958-89
 - 2 Newsletter, 1989-2000
 - 2.1 Newsletters, 2001-04
 - 2.2 Newsletters, 2005-
 - 3 HSA Headquarters File, 1989-
 - 4 HSA Headquarters File, 1958-66

- 35 Western Reserve
 - 1 Miscellaneous, 1947-61
 - 2 Miscellaneous, 1969-87
 - 3 News Clippings, Articles, undated
 - 4 Herb Garden
 - 5 Publications
 - 6 Herb S., Programs, Membership, 1950-80
 - 7 HSA Headquarters File, 1942-62

- 8 HSA Headquarters File, 1963-93
- 9 HSA Headquarters File
- 10 Membership Rosters, 1950-90
- 11 Membership Rosters, 1992-2000
- 12 Histories, 1976, 1982, 1992
- 13 Correspondence, 1953-63
- 14 Treasurer's Reports, 1949-65
- 15 Budgets, 1954-66
- 16 Bank Statements, 1960-65
- 17 Ledgers, 1953-66
- 18 Miscellaneous, 1952-65

- 35.1 Western Reserve
 - Cooking with Herb Scents, 1991

- 36 Western Reserve Newsletters, 1948-80
- 37 Western Reserve Newsletters, 1981-90
- 37.1 Western Reserve Newsletters, 1991-2002

- 38 Western Reserve cont.
 - 1 Newsletters, 2003-07
 - 2 Newsletters, 2008-

- 39 Western Reserve The Journal, 1974-83
- 40 Western Reserve The Journal, 1984-90
Scrapbook, 1948-64

- 41 Wisconsin Administrative Files
 - 1 Miscellaneous, 1976-87
 - 1.2 Headquarters File, 1988-96
 - 2 History
 - 3 Herb Day, 1987
 - 4 HSA Annual Meeting, 1988
 - 5 Clippings
 - 6 Newsletters, 1978-84
 - 7 Newsletters, 1988-95
 - 7.2 Newsletters, 1996-2007
 - 8 HSA Headquarters File, 1997

- 41.1 Wisconsin Newsletters and Publications, 2007-

- 42 Western Pennsylvania
 - 1 Inventory, 1995
 - 2 Miscellaneous, 1958-
 - 3 Programs (Roster Year Books), 1958-84

- 3.5 Program Roster, 1998-
- 4 History, 1958-82 (see also RG 3 B 46)
- 5 Herb Gardens/Exhibits
- 6 Herb Studies, 1966
- 7 Publications
- 8 Clippings
- 9 Newsletters, 1969-2004
- 10 HSA Headquarters File, 1958-88
- 10.1 HSA Headquarters File, 1988-

- 42.1 Western Pennsylvania cont.
 - 1 Newsletters, 2005-07
 - 2 Newsletters, 2008
 - 3 Newsletters, 2009
 - 4 Newsletters, 2010-

- 43
 - 1 Herb Guild, Miscellaneous, 1988-
 - 2 Herb Guild, Newsletters, 1991-
 - 3 Blue Ridge, News Clippings
 - 4 Blue Ridge, Newsletters, 1997-
 - 5 Blue Ridge Headquarters File, 1996-2001
 - 6 Carolina Foothills, 1999-2000
 - 7 Colorado West Desert, 1998-2000
 - 8 Delaware County Newsletters
 - 9 Hancock County
 - 10 Hancock County, Headquarters File
 - 11 York/Durham
 - 12 Portland
 - 13 Ridge & Valley

- 44 Central Ohio
 - 1 Miscellaneous, 1981-87
 - 2 Miscellaneous, 1988
 - 3 Clippings
 - 4 Newsletters, 1983-96
 - 5 Newsletters, 1997
 - 6 Headquarters File, 1988-

- 44.1 Central Ohio

- 45 Chattahoochee
 - 1 Miscellaneous, 1981-
 - 2 Newsletters, 1989-93
 - 3 HSA Headquarters File, 1988-
 - 3.5 Headquarters File, 2002-
 - 4 News Clippings, 2001-

- 46 Notebook – Histories of early units, compiled in 1974: New York, New England,

Philadelphia, St. Louis, N. California, S. California, Connecticut, Western
Pennsylvania, N. New Jersey, S. Michigan

- 47 Central Indiana
 - 1 Newsletters, 1997-
 - 1.5 Headquarters File, 1996-
 - 2 News Clippings, 1997-
 - 3 Miscellaneous, 1997-

- 48 Rocky Mountain
 - 1 Newsletters, 1997-2003
 - 1.2 Newsletters, 2004-08
 - 1.3 Newsletters, 2009-
 - 2 Miscellaneous
 - 3 Headquarters File

- 49 South Jersey
 - 1 Newsletters, 1997-
 - 2 Miscellaneous
 - 3 Headquarters File, 1997-2006
 - 4 Headquarters File, 2007-

- 50 Colonial Triangle of Virginia
 - 1 Newsletters, 2000-05
 - 1.2 Newsletters, 2006-10
 - 1.3 Newsletters, 2011-
 - 2 News Clippings
 - 3 Headquarters File, bylaws, standing rules

- 51 Sangre De Cristo
 - 1 Newsletter, 1999
 - 2 Miscellaneous, 2003
 - 3 Headquarters File, 1999-

- 52 Miscellaneous Units
 - 1 Delaware County
 - 2 Fountain City, 2005-
 - 3 Heart of the Valley, 2009
 - 4 Mason Dixon Newsletters, 2003
Headquarters File
 - 5 Michiana
 - 6 Northeast Wisconsin, Newsletters, 2002-07
 - 7 Northeast Wisconsin, Newsletters, 2008-
 - 8 Northeast Wisconsin, Headquarters File, 2002-06
 - 9 Northeast Wisconsin, Headquarters File, 2007

- 52.1 Miscellaneous Units

- 1 Michiana Miscellaneous
- 2 Old Alabama Town, Newsletters, 2001-
- 3 Pomona Valley, Headquarters File, Newsletters, 1999-
- 4
- 5
- 6 Roanoke Valley, Newsletters, 2000
- 6.1 Roanoke Valley, Headquarters File
- 6.2 Shenandoah

- 53 Miscellaneous Units & Districts
 - 1 California
 - 2 Central
 - 3 Michigan
 - 4 Mid-Atlantic
 - 5 Northeast

- 53.1 Miscellaneous Units & Districts
 - 1 Northwest
 - 2 Southeast
 - 3 Southeast Texas
 - 4 Western

- 53.2 Miscellaneous Units & Districts
 - 1 Greater Cincinnati
 - 2 Hill Country
 - 3 Philadelphia
 - 4 South Central

- 54 Disbanded Units
 - 1 Gahanna, Ohio
 - 2 Heart of the Valley
 - 3 Indiana and Westmoreland, PA
 - 4 Roanoke Valley

R.G. 4: Photographs and Scrapbooks

<u>Box</u>	<u>Folder</u>	
1	1	Annual Meeting, 1952
	2	Annual Meeting, 1959
	3	Annual Meeting, 1969 (White House Presentation)
	4	Annual Meeting, 1978
	5	Annual Meeting, 1981
	6	Annual Meeting, 1983
	7	Annual Meeting, 1986
	8	Annual Meeting, 1987
	9	Annual Meeting, 1988
	10	Annual Meeting, 1989

	11	Annual Meeting, 1992
	12	Annual Meeting, 1993
	13	Annual Meeting, 1994
	14	Annual Meeting, 1995
	15	Annual Meeting, 1996
2	16	Annual Meeting, 1997
	17	Annual Meeting, 1998
	18	Annual Meeting, 1999
	19	Annual Meeting, 2000
	20	Annual Meeting, 2001
3	21	Annual Meeting, 2002
	22	Annual Meeting, 2003
	23	Board Meetings, 1940-1992
	24	Board Meetings, 1993
	25	Exhibits
4	26	Gardens, Members
	27	Gardens, Members
	28	Gardens, Members
	29	Gardens, Miscellaneous
	30	Gardens, Unidentified
	31	Gardens, National Herb Garden, Dedication, 1980
	32	Gardens, National Herb Garden, Dedication, 1980
	33	Gardens, National Herb Garden, Fundraising, 1977-78
	34	Gardens, National Herb Garden, Miscellaneous
5	35	Headquarters, Boston
	36	Headquarters, Kirtland, Archive Dedication, 1994
	37	Headquarters, Kirtland, Signing Dedication, 1988
	38	Headquarters, Kirtland, Miscellaneous, 1988
	39	Herbs
	40	HSA Postcard Series
6	41	Members, A-B
	42	Members, C-D
	43	Members, E-F
	44	Members, G-H
	45	Members, I-J
	46	Members, K-L
	47	Members, M-N
	48	Members, O-P
	49	Members, Q-R
	50	Members, S

- 51 Members, T-V
 - 52 Members, W-Z
 - 53 Members, Unidentified
- 7
- 54 Miscellaneous Photos, Herbarist, n.d.
 - 55 Special Events, P. Lord Room Dedication, 1994
 - 56 Miscellaneous Activities (Award Dinners, Groups)
- 8
- 57 Units, Arkansas
 - 58 Units, Connecticut
 - 59 Units, The Herb Guild
 - 60 Units, Nashville
 - 61 Units, New England
 - 62 Units, New York
 - 63 Units, North Central Texas
 - 64 Units, Northern New Jersey
 - 65 Units, Philadelphia
 - 66 Units, Pomona Valley
 - 67 Units, Southern California
 - 68 Units, South Texas
 - 69 Units, Western Pennsylvania
 - 70 Units, Western Reserve
- 9
- Boston Annual Meeting, 50th Anniversary
- 9.1.1 Duplicate Archive slides for: Artists in Thyme, Construction of an Herb Garden, Fragrance of Potpourri, Gardens of Williamsburg, Herb Gardening, Herbs for use and delight
 - 9.1.1.2 Duplicate Archive slides for : Herbs of Greece, National Herb Garden, New Zealand, Powers and cures, Public gardens
- 9.1 Slides, Various gardens, including, Tryon Place, Huntington Gardens, Getty Museum, Kingwood Garden, Longwood Garden, Mohonk Mountain, etc., and HSA Meeting in Cleveland in '86
 - 9.2 Slides, Herb Trips with HSA, Foster, Caprilands, Cloisters, by/donated by Martha Boice, 2009
 - 9.3 Slides, English, Irish, and Scottish Gardens, 1987, including Savill, Great Fosters, Merton, Graham Stuart Thomas, Cadman Spillman, St. Albans Church, Hatfield House, Leeds Castle, Sissinghurst, Hever Castle, Ian Thomas, Lavenham, Bressingham Gardens, Icen Museum, Oxburg Hall, Norfolk Lavender Farm. Includes articles and some slide scripts.

- 10 Scrapbook, Boice, Martha
- 11 Scrapbook, Boice, Martha (2)
- 12 Scrapbook, Barrow, Jamie
- 12.1 Scrapbook, White, Elizabeth Wade
- 13 Scrapbooks, Western Reserve Unit
- 14 Scrapbooks, Miscellaneous
 - Pioneer Herb Society 1992-1993
 - Region IV 1990-1992
 - Priscilla Sawyer Lord home, Marblehead, Mass.
 - Priscilla Sawyer Lord Room dedication, 1994
 - Headquarters renovation, 1991
- 14.1 Scrapbook, Bechtel, Edwin DeTurck, prepared by Louise Bechtel
- 15 Scrapbooks, Miscellaneous
 - Jane Haynes, "Spreading the herb-word"
 - Madeline Hill, Herb Society of America President, 1986-1988
 - Betty Stevens President, 1990-1992
 - Amy Core President of HSA 1970-1972
 - The Vineyard House, 1998
- 15.1 Scrapbook, Northeast District Gathering, 1997
- 16 Slides, National Herb Garden, n.d.
- 17 Slides, Indian Medicinal Plants
- 18 Slides, Miscellaneous
- 19 Slides, Miscellaneous
- 20 Slides, Miscellaneous, 1950-2001
- 21 Slides, Garden Show, 1960
- 22 Slides, Miller, Tunkie and McBride, Helen, n.d.
- 22.1 Slides, Notebook, slides sent to digmypeis.com for digitization, NHG: American Indian Garden, National Herb Garden, Herbs for use and delight, Herb Gardening, Herbs: a beginners guide, Public gardens maintained by HSA members. (See RG 8, 1.2, Box 8 for Slide lecture scripts)

- 22.2 Slides, Powers and cures (See RG 8, 1.2, Box 8 for Slide lecture scripts) & Misc. Slide presentation, dupes
- 22.3 Slides, Miscellaneous
 Herbs of Greece, no script
 National Herb Garden, member tour, 2000
 NHG dedication 1980 (photos 1985, 1991, 1993, 1995
 NHG mixed 1999
 Origanum (69), from Dick Dennis, no script
 Public Gardens, includes script
 Spotlight in HSA, by Joanna Bristol, no script
 United plant savers, unnumbered, no script
 Welcome to HSA, 2003 (includes script)
- 22.4 Slides, Miscellaneous
 Collection of Dean C. Pailler, herbs and flowers (1200) Binder #1
 Collection of Dean C. Pailler, herbs and flowers (1200) Binder #2
 HSA trip to England, by Martha Boice, 1987
 Slide sets, dupes (?), two binders
- 22.5 Slides, Miscellaneous
 Kenny, Pat (107) donated my Mary Wohlleb, identification on slide
- 22.6 Slides, Miscellaneous
 Slides from Dorothy C. Fish
- 22.7 Slides, Miscellaneous
 Glass slides, 1994, (CTG)
- 22.8 Slides, Miscellaneous
 Assorted slides, donated by Judy Bates, and including research grant slides
 1995, Annual Conference 2000, Promising plants 2004, HSA Headquarters
 (n.d.)
- 22.9 Slides, Miscellaneous, some in trays with scripts, and Photo CDs
 An Herb Beginner's Guide
 Construction of an Herb Garden
 Herb Gardening
 National Herb Garden, donated by C. Cadwalader
 Flower show, Oxnard, CA, Ganna Walsha Gardens, Gardens of Santa
 Barbara, CA, Schreiner Garden near Salem, Oregon, n.d.
- CD, 2003 Conference, Portland, OR
 CD, Candida and Awards, 2004 Annual Conference
 CD, Candida and Awards, 2004 Annual Conference
 CD, 2004 Annual Conference
 CD, 2004 Ed Con
 CD, 2005 Annual Conference

CD, 2005 Annual Conference
CD, 2006 Annual Meeting
CD, 2006 Ed Con
CD, 2006 Ed Con
CD, 2006 Ed Con
CD, 2006 Ed Con
CD, 2007 Herb Day
CD, 2007 Mid Atlantic Gathering
CD, 2008 Boston photos
CD, 2009 ED Con, North Texas Unit

CD, 2004 Random Color/Nature Print
CD, Basil Images for Herbarist
CD, Flower Article (Rossi-Wilcox)
CD, Fuchs Herbal
CD, Botticelli, High Res, for Biblical Plants article
CD, Herbs needlepoint
CD, 2006-2007 Events, from Billy Parus
CD, 2006-2007, Events, from Billy Parus, #2
CD, Images for Herbarist notecards
CD, 2007, Mid-Atlantic Symposium
CD, 2007 NASA photos
CD, Revised Planned Giving Brochure
CD, General Membership Brochure
CD, Great Lakes and Northeast Gathering

23 Video, Annual Meeting, 1991, 1992

24 CD-ROM Photos discs

#1 All American Selection photos, 2010
#2 Alnwick, the poison garden
#3 Annual Meeting, 2003
#4 Annual Meeting, Awards, n.d.
#5 Art Work, Beadle (5)
#6 Board Meeting, 2005
#7 Building Photos, n.d.
#8 Central District Gathering, 2003
#9 Donley, Ellie, n.d.
#10 HSA 75th Anniversary, Boston, from Foster, Bunny
#11 HSA By Laws, 1996 & Faro, Gretchen, 2004
#12 HSA Fall Gathering
#13 HSA Herb Garden, HSG
#14 HSA Membership, 2003
#15 HSA Slide Show, 2011
#16 Keifer, Lorraine, Images of Plants
#17 National Herb Garden, n.d.
#18 Roses at Mattisfont, n.d.

- #19 Southeast District, 2003
 - #20 West District, n.d.
 - #21 My Digital Media dvd (slide presentations) Tiffs
 - #22 My Digital Media dvd (slide presentations)
 - #23 My Digital Media dvd (slide presentations)
- 25 VHS, CD, and audiocassettes
- #1 VHS, America's most beautiful herb garden, n.d.
 - #2 VHS, Board Member Manual Video, Vol. I (1996)
 - #3 VHS, Board Member Manual Video, Vol. II (1996)
 - #4 VHS, Gardening program on NHK: Pizza Garden for kids, n.d.
 - #5 VHS, Second Time Around, HSA Library, n.d.
 - #6 VHS, Victory Gardens: Children's Garden of River Farm, n.d.
 - #7 VHS, Misc., nd.
 - #8 CD, Eight Years of Hortideas, 2003
 - #9 CD, International Festival-Institute at Round Top
 - #10 CD, Herbalpedia, Basil, 2003
 - #11 CD, Herbalpedia, Garlic, 2004 (x2)
 - #12 CD, HerbWeb by Tim Johnson, [2002]
 - #13 CD, Plant-It, 1994
 - #14 CD, Story Corp, June 2008 (x3)
 - #15 CD, United Plant Savers "At Risk" Native Medicinal Plant Slide Show
 - #16 Audiocassette, Culpepers
 - #17 Audiocassette, Ecological Herbalism, Replanting the Herbs We Love
 - #18 Audiocassette, Grow 15 herbs
 - #19 Audiocassette, Herbs & Supplements in treatment of Inflammatory disease
 - #20 Audiocassette, Herb Growing
 - #21 Audiocassette, Herbs 88, Spiritual/Scientific
 - #22 Audiocassette, Herb 88, Using Newsletters
 - #23 Audiocassette, Herb 89, Misc.
 - #24 Audiocassette, International Festival-Institute at Roundtop, 1997
- 26 VHS, CD, and audiocassettes
- #1 Garlic interview, M. Hill, Gwen Barclay, H. Flowers, 12/03
 - #2 Garlic interview, Susan Belsinger, 12/29/03
 - #3 Garlic interview, Charles Voight, 12/30/03
 - #4 Garlic interview, Lorraine Kiefer, 12/30/03
 - #5 Garlic interview, Pat Reppert, 1/02/04
 - #6 Pelargonium interview, Madeline Hill, Gwen Barclay, 10/18/05
 - #7 Pelargonium interview, Susan Belsinger, 10/20/05
 - #8 Pelargonium interview, Mark Langan, 11/07/05
 - #9 Lemon balm interview, Madeline Hill, 10/23/06
 - #10 Lemon balm interview, Susan Belsinger, 11/06/06

R.G. 5: Publications

Series 1: The Herbarist

Box

- 1 1935-43 (5 copies each year)
- 2 1944-48 (5 copies each year)
- 3 1949(3), 1950(5), 1951(5), 1952(5), 1951 Supplement to Advertiser (5), 1950-54 (1)
- 4 1953-57 (5), index 1955-61 (1)
- 5 1958-62 (5), index 1962-66 (1)
- 6 1963-66 (5)
- 7 1967-70 (5), index 1967-71 (1)
- 8 1971-73 (5), index 1972-76 (1)
- 9 1974-76 (5)
- 10 1977-78 (5), index 1977-1981 (1)
- 11 1979-1980 (5)
- 12 1981-82 (5), index 1982-86 (1)
- 13 1983-84 (5)
- 14 1985-86 (5)
- 15 1987-88 (5), index 1987-91 (1)
- 16 1989-90 (5)
- 17 1991-92 (5)
- 18 1993-94 (5)
- 19 1995 (5)
- 20 The Herbarist Indices 1935-44 (5), 1945-49 (5), 1950-54 (5), 1955-1 (4),
1962-66 (5), 1967-71 (5), 1972-76 (5) see box 13, 1977-81 (5), 1982-86 (5)
- 21 1996-1999 (5 copies each year), Index 1992-96 (5)
- 22 2000-01 (5)
- 23 2002-03 (5)
- 24 2004-05 (5)
- 25 2006-08 (5)
- 26 2009-2012(5)
- 26.1 2013-2015 (5)
- 26.2 2017-2018 (5)
- 26.3 Best of the Herbarist
- 27 Herbarist Special Edition
- 28 Herbarist, The Early Years & The War Years
- 28.1 Herbarist, The Early Years & The War Years
- 29 Herbarist, Miscellaneous Correspondence
- 29.1 Herbarist, Miscellaneous Correspondence
- 29.2 Herbarist, Miscellaneous Correspondence
 - 1 Subscription and format changes

R. G. 5: Publications

Series 2: Annual Meetings/Reports

Box

- 1 1941-1959
- 2 1960-1985 (Lacks 1970, 1975, 1979, 1980)
- 3 1986, 1988-1990
- 4 1991-1993
- 7 1998-2019

R. G. 5: Publications

Series 3: Newsletters

Box

1 (Flat)	1935-39, 1954-70
2 (Flat)	1970-86
3 (Flat)	Winter 1986-Autumn 1992
4 (Flat)	1992-97
5 (Flat)	1998-2000
6 (Flat)	2000-01
7	2002-03
8	2004-05
9	2006-08
10	2009-2010
11	2001-2015

R. G. 5: Publications

Series 4: *Herb Grower Magazine*

(*American Herb Grower* became *Herb Grower*. Published by members Gertrude (Bunny) Foster and Phil Foster.)

Box

1	April 1947-July 1948
1.1	August 1948-1949
1.2	1947, 1948, 1949, 1952 bound
2	1950-51
3	1952-54
4	1955-59
5	1960-62
6	1963-68
7	1969-72
8	1973-77
9	1978-84

R. G. 5: Publications

Series 5: Miscellaneous Publications

Box Folder

1		The Bulletin, 1965-68 (5), Plant Collections, 2002-03 (2), 2004 (1), 2005 (2), 2003 (2), 2004 (1), 2005 (2), 2006 (1), not date (2)
2	1	Early publications, Herb Recipes, 1936 (2), The place of the dried herb in industry, 1937 (2)
	2	War-time publications, 1941-45: Medicinal Herbs Needed Today, 1941 (4), 1942 (1) Some Sources of Herb Seeds, Plants, and Dried Products, 1945 (3) Notes on the Commercial Cultivation of Sage, 1941 (1)

- 1941 Records of a Group of Commercial Growers of Sage, 1942 (3)
 1943 Sage Report (3)
 1944 Report, Commercial Research Committee (4), 1945 (3)
 The Role of the Herb Grower in the War Effort, 1943 (3)
 The Home-Growing of 12 Condiment Herbs, 1942 (5)
 Belladonna Report of The Herbarist article by Heber Youngken, 1941 (2)
 List of Gardens and Herbaria devoted to medicinal plants and other herbs, 1943(3)
 Preliminary notes in Control of Insects and Disease in Herbs (1)
 HSA Reading Lists, 1942 (1), 1952 (5), 1960 (4), 1965 (6), 1974 (5), 1980 (4)
 4 vacant
 5 *Herb Buyers Guide*, 1945 (1), 1953 (3), 1955 (2), 1956 (1), 1962 (2), 1964 (4),
 1966-73 (2)
 6 *The Herbarist*, 1938
 7 *The Herbarist: Supplements and Reprints, 1937-1977*
 The Place of Dried Herbs in Industry
 Supplement for Advertisers, 1951 (5)
 Postscript to 1976 *The Herbarist* (5)
 Botanicals as Env. Indicators, 1977 (5)
 Mary Gardens, 1953
 8 *A Primer for Herb Growing*, 1952 (5), 1954 (4), 1958 (3), 1961 (4), 1964 (2),
 1968 (3), 1971 (5), 1979 (4)
 9 The Use and Methods of Making an Herbarium, 1942 (2), 1950 (5), 1961 (5)
 10 Getting Started (Ideas for Establishing a Unit), 1992 (2)
 11 Judging Herbs, 1962 (4), 1985 (5)
 Rule Book for Exhibitors and Judges, 1980 (1)
 12 *The Beginner's Herb Garden*, 1983 (6), 2003 (2)
 13 John Hill, Herbalist Extraordinaire (3)
 16 Social Symposium, 20th anniversary, 1993-2013
- 2.1 Miscellaneous Publications
- 2.2 Miscellaneous Publications
- 2.3 Miscellaneous Publications
- 2.4 HSA Herbal Calendars, 2002, 2014
Speaking of Herbs: Ten Introductory Programs for Speakers, Wold, Betty, 1991
- 2.5 Lexington Leaflets, 1931-1939
- 3 *Traveler's Guide to Herb Gardens*, Research, 1986(3), 1988(5), 1992(4)
- 4 *Traveler's Guide to Herb Gardens*, Research, 1992
- 5 Membership Directories, Lists and Bylaws, 1948(4), 1950(4), 1951(2), 1953(5),

1955(6), 1956(5), 1958(5), 1960(5), 1962(3), 1966(4), 1968(5), 1970(4), 1972(5),
1974(5), 1976(5), 1978(5), 1980(5), 1982(4), 1984-86(4), 1986-88(3)

- 6 Membership Directories, Lists and Bylaws, 1988-2000
- 7 Membership Directories, Lists and Bylaws, 2001(5), 2003(4), 2005(5)
- 8 Non-HSA Horticultural Brochures
- 9 Pamphlets, Member and Non-member authored, alpha by title
- 9A A-CO
- 9B CU-GA
- 9C GL-HE
- 9D HE
- 9.1D HE-HL
- 9E HL-PH
- 9F PL-THO
- 9G THO-Z
- 10 vacant
- 11 Herb Journal, 1936-39 (3-5 copies of each)

R. G. 5: Publications

Series 6: News Clippings and Articles

<u>Box</u>	<u>Folder</u>	
1	1	vacant
	2	vacant
	3	Members, A-D
	4	Members, E-G
	4.1	Members, H-I
	5	Members, K-L
	5.1	Members, M-O
	6	Members, P-R
	6.1	Members, S
	7	Members, T-Z
2	1	News Article Clippings, Member Authored, List of Publications, 1947-53
	2	News Article Clippings, Member Authored, A-D
	3	Member Authored, E-I
	4	Member Authored, J-
	5	Member Authored, O-S
	6	Member Authored, T-Z
3	1	HSA, General, 1940-
	2	World War II
	3	Cooking (with herbs)
	4	Annual Meetings, 1948-
	5	vacant
	6	vacant
	7	National Herb Garden

- 8 Units (for unit clips, see R.G. 3)
- 9 General Herb Articles, 1979
- 10 General Herb Articles, 1980-99
- 11 General Her Articles, 2000-
- 4 Miscellaneous Publications, Non-member
- 5 Miscellaneous Publications, Non-member

R. G. 5: Publications

Series 7: Publications, HSA, Other

Box

- 1 Herbal Bytes

R. G. 5: Publications

Series 8: Copyright Documents and Correspondence

Box

- 1 Copyright Documents and Correspondence, Encyclopedia of Herbs
- 2 Copyright Documents and Correspondence, Herb Garden Design
- 3 Copyright Documents and Correspondence, HSA Essential Guide to Growing and Cooking with Herbs
- 4 Copyright Documents and Correspondence, Herbarist, 1970-1979
- 5 Copyright Documents and Correspondence, Herbarist, 1980-1989
- 6 Copyright Documents and Correspondence, Herbarist, 1990-1999
- 7 Copyright Documents and Correspondence, Herbarist, 2000-2009
- 8 Copyright Documents and Correspondence, Request for slides for other publications
- 9 Copyright Documents and Correspondence, Tasha's Herb Garden print
- 10 Copyright Documents and Correspondence, Travelers Guide to Herb Gardens

R. G. 6: Artifacts and Memorabilia

Box

- 1 (flat) Collectibles (books, pamphlets, cards, charts, postcards, prints,), HSA and non-HSA
- 2 (flat) Collectibles (printed materials), non-HSA (collected by members)
- 3 Collectibles, old file box
- 4 Collectibles (gavels, seal, medallions, pins)
20th Anniversary pins (2), 75th Anniversary pin, Lunaria Giving Society pins (3)
Scotsdale 2007 pin
- 5 Herbal Medications, boxed
- 6 Pen for Vineyard House Lease
- 7 Herbal Medications
- 8 Herbal Medications
- 9 Herbarist, Copper Plates and Engravings of Illustrations (from Madalene Hill)
- 10 Collectibles, Early HSA seals, gavels, pin, Priscilla Sawyer Lord plaque
- 11 Decorative linen napkins
- 12 Potpourri jars, Mathieu collection (see addendum), jars # 1-3
- 12.1 Potpourri jars, Mathieu collection (see addendum), jars # 4-16

- 12.2 Potpourri jars, Mathieu collection (see addendum), jars # 17-20
- 13 Mortar and Pestles, Bates collection
- 13.1 Mortar and Pestles, Bates collection
- 13.2 Mortar and Pestles, Bates collection

R. G. 7: Oversize and artwork

Box

- 1 Site Plans – Herb Garden Inniswood Metro Garden, Herb Garden U of MN
Landscape Arboretum
- 2 Western Reserve Unit, Herb Cookbook, Photostats
- 3 (flat file) Drawings and Blueprints of Kirtland Headquarters
- 4 (flat file) Western Reserve Unit – Misc. unframed artwork (11 matted prints)
- 5 (card file) Membership Card Indices
- 6 Western Reserve Unit, Herb Garden Map
- 7 Misc. Artwork, including E. Yeager

R. G. 8: National Organization, 1988-present

Series 1.1: Administration

Box Folder

- Board of Directors Meetings, reports, documents, and correspondence and Annual Meeting & Ed Con, reports, documents, and correspondence
- 1 .5 Board of Directors Meetings, reports, documents, and correspondence, June 1988
- 1 Board of Directors Meetings, reports, documents, and correspondence, October 1988
- 1.1 Board of Directors Meetings, reports, documents, and correspondence, March 1989
- 2 Board of Directors Meetings, reports, documents, and correspondence, June 1989
- 3 Board of Directors Meetings, reports, documents, and correspondence, October 1989
- 4 Board of Directors Meetings, reports, documents, and correspondence, March 1990
- 4.1 Board of Directors Meetings, reports, documents, and correspondence, June 1990
- 5 Board of Directors Meetings, reports, documents, and correspondence, October 1990
- 5.1 Board of Directors Meetings, reports, documents, and correspondence Committee Meetings Correspondence, October, 1990
- 6 Board of Directors Meetings, reports, documents, and correspondence, March 1991
- 6.1 Board of Directors Meetings, reports, documents, and correspondence, March 1991, Committee Meetings Correspondence
- 6.2 Board of Directors Meetings, reports, documents, and correspondence, June 1991
- 6.3 Board of Directors Meetings, reports, documents, and correspondence, June 1991, Committee Correspondence
- 6.4 Board of Directors Meetings, reports, documents, and correspondence, June 1991, Reports
- 7 Board of Directors Meetings, reports, documents, and correspondence, October 1991
- 7.1 Board of Directors Meetings, reports, documents, and correspondence, October 1991, Committee Meetings Correspondence
- 8 Board of Directors Meetings, reports, documents, and correspondence, April 1992
- 8.1 Board of Directors Meetings, reports, documents, and correspondence, April 1992, Committee Meetings Correspondence
- 8.2 Board of Directors Meetings, reports, documents, and correspondence, June 1992, Reports

- 8.3 Board of Directors Meetings, reports, documents, and correspondence, June 1992, Meeting
- 8.4 Board of Directors Meetings, reports, documents, and correspondence, June 1992, Committee Meeting Correspondence
- 9 Board of Directors Meetings, reports, documents, and correspondence, October 1992
- 9.1 Board of Directors Meetings, reports, documents, and correspondence, October 1992, Committee Meetings Correspondence
- 9.2 Board of Directors Meetings, reports, documents, and correspondence, October 1992, Committee Meetings Correspondence
- 10 Board of Directors Meetings, reports, documents, and correspondence, March 1993
- 10.1 Board of Directors Meetings, reports, documents, and correspondence, March 1993, Committee Meetings Correspondence

- 1.5 Board of Directors Meetings, reports, documents, and correspondence and Annual Meeting & Ed Con, reports, documents, and correspondence
 - 1 Board of Directors Meetings, reports, documents, and correspondence, June 1993, Committee Meetings Correspondence
 - 2 Board of Directors Meetings, reports, documents, and correspondence, June 1993,
 - 3 Board of Directors Meetings, reports, documents, and correspondence, June 1993, reports, including information about the development of internal checks
 - 4 Board of Directors Meetings, reports, documents, and correspondence, October 1993
 - 4.1 Board of Directors Meetings, reports, documents, and correspondence, October 1993
 - 5 Board of Directors Meetings, reports, documents, and correspondence, October 1993, Committee Meetings
 - 6 Board of Directors Meetings, reports, documents, and correspondence, March 1994
 - 7 Board of Directors Meetings, reports, documents, and correspondence, March 1994, Committee Meetings Correspondence
 - 8 Board of Directors Meetings, reports, documents, and correspondence, June 1994
 - 9 Board of Directors Meetings, reports, documents, and correspondence, June 1994, Reports
 - 10 Board of Directors Meetings, reports, documents, and correspondence, June 1994, Committee Meetings Correspondence
 - 11 Board of Directors Meetings, reports, documents, and correspondence, October 1994
 - 12 Board of Directors Meetings, reports, documents, and correspondence, March 1995
 - 13 Board of Directors Meetings, reports, documents, and correspondence, March 1995, Committee Meetings Correspondence
 - 14 Board of Directors Meetings, reports, documents, and correspondence, June 1995, Committee Meetings Correspondence
 - 15 Board of Directors Meetings, reports, documents, and correspondence, June 1995
 - 16 Board of Directors Meetings, reports, documents, and correspondence, June 1995
 - 17 Board of Directors Meetings, reports, documents, and correspondence, October 1995
 - 18 Board of Directors Meetings, reports, documents, and correspondence October 1995, Committee Meetings Correspondence
 - 19 Board of Directors Meetings, reports, documents, and correspondence, March 1996
 - 20 Board of Directors Meetings, reports, documents, and correspondence, March 1996, Reports

- 2 Board of Directors Meetings, reports, documents, and correspondence and Annual Meeting & Ed Con, reports, documents, and correspondence
 - 1 Board of Directors Meetings, reports, documents, and correspondence, June 1996
 - 2 Board of Directors Meetings, reports, documents, and correspondence, June 1996, Committee Meetings Correspondence
 - 3 Board of Directors Meetings, reports, documents, and correspondence, Fall 1996, Correspondence
 - 4 Board of Directors Meetings, reports, documents, and correspondence, Fall 1996, Facilities
 - 5 Board of Directors Meetings, reports, documents, and correspondence, Fall 1996, Reports
 - 6 Board of Directors Meetings, reports, documents, and correspondence, Spring 1997, Correspondence
 - 7 Board of Directors Meetings, reports, documents, and correspondence, Spring 1997, Facilities
 - 8 Board of Directors Meetings, reports, documents, and correspondence, Spring 1997, Correspondence
 - 9 Board of Directors Meetings, reports, documents, and correspondence, Summer 1997, Facilities
 - 10 Board of Directors Meetings, reports, documents, and correspondence, Summer 1997, Reports
 - 10.1 Annual Meeting & Ed Con, Denver, CO, 1997, documents
 - 10.2 Annual Meeting & Ed Con, Denver, CO, 1997, planning correspondence
 - 10.3 Annual Meeting & Ed Con, Denver, CO, 1997, speaker's proposals
 - 10.4 Annual Meeting & Ed Con, Denver, CO, 1997, vendors, awards, & tours
 - 12 Board of Directors Meetings, reports, documents, and correspondence, Fall 1997, Facilities
 - 13 Board of Directors Meetings, reports, documents, and correspondence, Fall 1997, Reports
 - 14 Board of Directors Meetings, reports, documents, and correspondence, Spring 1998, Correspondence
 - 15 Board of Directors Meetings, reports, documents, and correspondence, Spring 1998, Facilities
 - 16 Board of Directors Meetings, reports, documents, and correspondence, Summer 1998, Reports
 - 17 Board of Directors Meetings, reports, documents, and correspondence, Summer 1998, Facilities
 - 18 Annual Meeting & Ed Con, Baton Rouge, LA, 1998, documents
 - 18.1 Annual Meeting & Ed Con, Baton Rouge, LA, 1998, feedback surveys
 - 18.2 Annual Meeting & Ed Con, Baton Rouge, LA, 1998, speaker's proposals
 - 18.3 Annual Meeting & Ed Con, Baton Rouge, LA, 1998, vendors and exhibits
 - 19 Board of Directors Meetings, reports, documents, and correspondence, Fall 1998, Facilities
 - 20 Board of Directors Meetings, reports, documents, and correspondence, Fall 1998, Correspondence
 - 21 Board of Directors Meetings, reports, documents, and correspondence, Fall 1998, Reports

- 3 Board of Directors Meetings, reports, documents, and correspondence and Annual Meeting & Ed Con, reports, documents, and correspondence
 - 1 Board of Directors Meetings, reports, documents, and correspondence, Spring 1999
 - 2 Board of Directors Meetings, reports, documents, and correspondence, Summer, 1999
 - 3.1 Annual Meeting & Ed Con, Toronto, ON, 1999, documents
 - 3.2 Annual Meeting & Ed Con, Toronto, ON, 1999, feedback surveys
 - 3.3 Annual Meeting & Ed Con, Toronto, ON, 1999, speaker's proposals
 - 3.4 Annual Meeting & Ed Con, Toronto, ON, 1999, documents and contracts
 - 4 Board of Directors Meetings, reports, documents, and correspondence, Fall 1999
 - 5 Board of Directors Meetings, reports, documents, and correspondence, Spring 2000, Kirtland, OH
 - 6 Board of Directors Meetings, reports, documents, and correspondence, Summer 2000
 - 7.1 Annual Meeting & Ed Con, Baltimore, MD, 2000, documents
 - 7.2 Annual Meeting & Ed Con, Baltimore, MD, 2000, documents (2)
 - 8 Board of Directors Meetings, reports, documents, and correspondence, Fall 2000, Kirtland, OH
 - 9 Board of Directors Meetings, reports, documents, and correspondence, Fall 2000, Kirtland, OH, correspondence
 - 10 Board of Directors Meetings, reports, documents, and correspondence, Fall 2000, Kirtland, OH, facilities
 - 11 Board of Directors Meetings, reports, documents, and correspondence, Spring 2001, Kirtland, OH
 - 12 Board of Directors Meetings, reports, documents, and correspondence, Annual Meeting & Ed Con reports, documents, and correspondence 2001

- Box 4 Board of Directors Meetings, reports, documents, and correspondence and Annual Meeting & Ed Con, reports, documents, and correspondence
 - 1 Annual Meeting & Ed Con, Fort Worth, TX, 2001, documents
 - 2 Board of Directors Meetings, reports, documents, and correspondence, Fall 2001, Kirtland, OH
 - 3 Board of Directors Meetings, reports, documents, and correspondence, Spring 2002, Cleveland, OH
 - 4 Board of Directors Meetings, reports, documents, and correspondence, Spring 2002, Cleveland, OH, facilities
 - 4.1 Board of Directors Meetings, reports, documents, and correspondence, Spring 2002, Cleveland, OH
 - 4.2 Board of Directors Meetings, reports, documents, and correspondence, Spring 2002, Cleveland, OH
 - 5 Board of Directors Meetings, reports, documents, and correspondence, Summer 2002, Hershey, PA
 - 6 Annual Meeting & Ed Con, Hershey, PA, 2002, documents

- 7 Board of Directors Meetings, reports, documents, and correspondence, Fall 2002, Kirtland, OH
 - 8 Board of Directors Meetings, reports, documents, and correspondence, Spring 2003, Cleveland, OH
 - 9 Board of Directors Meetings, reports, documents, and correspondence, Summer 2003, Portland, OR
 - 9.1 Annual Meeting & Ed Con, Portland, OR, 2003, documents
 - 10 Board of Directors Meetings, reports, documents, and correspondence, Fall 2003, Cleveland, OH
 - 11 Board of Directors Meetings, reports, documents, and correspondence, Spring 2004, Cleveland, OH
 - 12 Board of Directors Meetings, reports, documents, and correspondence, Summer 2004
 - 13 Annual Meeting & Ed Con, Cleveland, OH, 2004, documents
 - 13.1 Annual Meeting & Ed Con, Cleveland, OH 2004, visitor book
- 4.5 Board of Directors Meetings, reports, documents, and correspondence and Annual Meeting & Ed Con, reports, documents, and correspondence
- 1 Board of Directors Meetings, reports, documents, and correspondence, Fall 2004, Cleveland, OH
 - 2 Board of Directors Meetings, reports, documents, and correspondence, Spring 2005, Beachwood, OH
 - 5 Board of Directors Meetings, reports, documents, and correspondence, Summer 2005, Atlanta, GA
 - 6 Annual Meeting & Ed Con, Atlanta, GA, 2005, documents
 - 7 Board of Directors Meetings, reports, documents, and correspondence, Fall 2005, Cleveland, OH
 - 8 Board of Directors Meetings, reports, documents, and correspondence, Spring 2006, Cleveland, OH
 - 9 Board of Directors Meetings, reports, documents, and correspondence, Summer 2006, Indianapolis, IN
 - 10 Annual Meeting & Ed Con, Indianapolis, IN, 2006, documents
 - 11 Board of Directors Meetings, reports, documents, and correspondence, Fall 2006, Cleveland, OH
 - 11.1 Board of Directors Meetings, reports, documents, and correspondence, January 2007, New Orleans
 - 12 Board of Directors Meetings, reports, documents, and correspondence, Spring 2007, Scottsdale, AZ
 - 13 Annual Meeting & Ed Con, Scottsdale, AZ, 2007, documents
 - 14 Board of Directors Meetings, reports, documents, and correspondence, Fall 2007, Cleveland, OH

- 5 Board of Directors Meetings, reports, documents, and correspondence and Annual Meeting & Ed Con, reports, documents, and correspondence
 - 1 Annual Meeting & Ed Con, Boston, MA, 2008, documents & correspondence
 - 1.1 Annual Meeting & Ed Con, Boston, MA, 2008, documents notebook
 - 1.2 Executive Board Meeting, Summer 2008, Boston, Mass
 - 2 Annual Meeting & Ed Con, Grand Rapids, MI, 2009, highlights & documents
 - 2.1 Annual Meeting & Ed Con, Grand Rapids, MI, 2009, documents, proposals and evaluations
 - 3 Annual Meeting & Ed Con, Nashville, TN, 2010, documents
 - 4 Annual Meeting & Ed Con, Pittsburgh, PA 2011, documents
 - 5 Annual Meeting & Ed Con, Pittsburgh, PA 2011, feedback surveys
 - 6 Annual Meeting & Ed Con, Austin, TX, 2012, documents
 - 7 Annual Meeting & Ed Con, St. Louis, MO, 2013, documents
 - 8 Annual Meeting & Ed Con, St. Louis, MO, 2013, feedback surveys
 - 9 Annual Meeting & Ed Con, Concord, CA, 2014, documents
 - 10 Annual Meeting & Ed Con, Williamsburg, VA, 2015, documents
 - 11 Annual Meeting & Ed Con, Ashville, NC, 2016, documents
 - 12 Annual Meeting & Ed Con, Little Rock, AR, 2017, documents
 - 13 Annual Meeting & Ed Con, Tarrytown, NY, 2018, documents
 - 13.1 Annual Meeting & Ed Con, Tarrytown, NY, 2018, Skit, "The Beginning"

- 6 Presidential Papers, 1989-
 - 1 _____, Trevarrow, Sue 1988-1990
 - 1.1 Trevarrow, Sue, Awards presentation
 - 1.2 Trevarrow, Sue, Board meeting, 1988
 - 1.3 Trevarrow, Sue, Financial statements
 - 1.4 Trevarrow, Sue, Gardens of HSA
 - 1.5 Trevarrow, Sue, Headquarters search
 - 1.6 Trevarrow, Sue, Herb database
 - 1.7 Trevarrow, Sue, Herbarist
 - 1.8 Trevarrow, Sue, Miscellaneous correspondence

 - 2 _____, Stevens, Betty 1990-92
 - 2.1 Stevens, Betty, Miscellaneous correspondence

 - 3 _____, Barrow, Jamie Hamilton 1992-94
 - 3.1 Barrow, Jamie Hamilton, Annual meeting
 - 3.2 Barrow, Jamie Hamilton, Great Lakes Symposium
 - 3.3 Barrow, Jamie Hamilton, Headquarters garden
 - 3.4 Barrow, Jamie Hamilton, Honorary President selection
 - 3.5 Barrow, Jamie Hamilton, Miscellaneous correspondence
 - 3.6 Barrow, Jamie Hamilton, Newsletter articles
 - 3.7 Barrow, Jamie Hamilton, Presidents Advisory Committee
 - 3.8 Barrow, Jamie Hamilton, Wenham Museum

 - 4 _____, van Nostrand, Janet 1994-96

- 4.1 van Nostrand, Janet, Correspondence with Elsie D. Morey (Darrah Collection)
- 4.2 van Nostrand, Janet, Miscellaneous correspondence
- 5 _____, Amidon, Caroline W. 1996-98
- 6 _____, Brobst, Joyce E. 1998-2000
- 7 _____, Wohlleb, Mary Remmel 2000-02
- 7.1 Wohlleb, Mary Remmel, Correspondence with Deni Bown
- 7.2 Wohlleb, Mary, Correspondence with Joanna Bristol
- 7.3 Wohlleb, Mary, Correspondence with Arlene Kastner
- 7.4 Wohlleb, Mary, Miscellaneous correspondence
- 8 _____, Kestner, Arlene PhD 2002-04
- 10 _____, Abbott, Anne 2006-08
- 11 _____, Sutton, Lois 2008-10

7 Members Merger Approval Ballots

- 7.1 Merger and Exemption Status documents and correspondence, 1989-1995

8 Bylaws

- 1 1933-56
- 2 1964-77
- 3 1978-84
- 4 Jyrovat File, 1962-76
- 5 1980
- 6 1996 Bylaws Committee Work

- 8.1 Bylaws, Amendments, 2010

9 Tax Returns and Financial Statements and Accountant Review Report, by year

- 1 Tax Return and withholding, 1988
- 2 Tax Return and withholding, 1989
- 3 Tax Return and withholding, 1990
- 4 Tax Return and withholding, 1991
- 5 Tax Return and withholding, 1992
- 6 Tax Return and withholding, 1993
- 7 Tax Return and withholding, 1994
- 8 Tax Return and withholding, 1995
- 9 Tax Return and withholding, 1996
- 9.1 Tax Return, 1997
- 11 Cancel

- 12 Tax Return, 1999
- 13 Tax Return, 2000
- 14 Tax Return, 2001
- 15 Tax Return, 2002
- 16 Tax Return, 2003
- 17 Tax Return, 2004
- 18 Tax Return, 2005
- 19 Tax Return, 2006

- 10 Board of Directors, development and support
 - 1 Operating Manuals, Misc. Years, 1990-
 - 2 Cancel
 - 3 Board of Directors Manuals and Handbooks, 1989-

- 10.1 Board of Directors, development and support
 - 1 Suggested subject headings for HSA Board Minutes, 2003
 - 2 Board of Directors nominations, 2006
 - 3 Office Management Reports, 1989, 1990
 - 4 Board of Directors nominations, 1989-2005
 - 5 Board of Directors "Creating a Shared Vision" correspondence, 2000
 - 6 "Building our Vision for the Future" Surveys, 2000
 - 7 "Vision 2010: Path to Preeminence"

- 11 Ways and Means Correspondence, 1990-

- 12 Budget, Finance, and Personnel Development
 - 1 Annual Giving Correspondence, 1989-1999
 - 2 Annual Giving Correspondence, 2000
 - 3 Annual Giving Correspondence, 2000-2001 (1)
 - 4 Annual Giving Correspondence, 2000-2001 (2)
 - 5 Annual Giving Correspondence, 2000-2001 (3)
 - 6 Annual Giving Correspondence, 2000-2001 (4)
 - 7 Annual Giving Correspondence, 2001-2002, A-C
 - 8 Annual Giving Correspondence, 2001-2002, D-H
 - 9 Annual Giving Correspondence, 2001-2002, I-
 - 9.1 Annual Giving Correspondence, Mellon, Rachel L., 2000-2007
 - 9.2 Annual Giving Correspondence, 2003-
 - 10 Budget Planning and Treasurer's Reports, 1988-1990
 - 11 District Funds, 2001
 - 12 Endowments and Estate Giving, Behest, Beher, 2001
 - 13 Endowments and Estate Giving, Behest, Capan, 1995
 - 13.1 Endowments and Estate Giving, Behest, Capan, 1995
 - 13.2 Endowments and Estate Giving, Behest, Carroll, 2002
 - 13.3 Endowments and Estate Giving, Behest, Casmer, 1990
 - 14 Endowments and Estate Giving, Behest, Cassa, 2001
 - 14.1 Endowment and Estate Giving, Behest, Keck, 1989

- 15 Endowments and Estate Giving, Behest, Long, 1996
 - 16 Endowments and Estate Giving, Behest, Luplow, 1999
 - 17 Endowments and Estate Giving, Behest, Price, 1991
 - 18 Endowments and Estate Giving, Behest, Purcell, 1997
 - 19 Endowments and Estate Giving, Behest, Sample, 1989
 - 19.1.1 Endowments and Estate Giving, Behest, Samull, 2013
 - 19.1 Endowments and Estate Giving, Behest, Scher, 2001
 - 19.2 Endowments and Estate Giving, Behest, Schott, 2002
 - 20 Endowments and Estate Giving, Behest, Vanderhoeff, 1989
 - 21 Endowments and Estate Giving, Behest, Williams, 1989
 - 22 Endowments and Estate Giving, Behest, Williamson, 1996
 - 23 Endowments and Estate Giving Correspondence, 1989-
 - 24 Endowments and Estate Giving, General Endowments, 1990-1995
 - 25 Endowments and Estate Giving, General Endowments, 1998-1999
 - 26 Endowments and Estate Giving, General Endowments, 2000-
 - 27 Endowments and Estate Giving, National Herb Garden, 1998-1999
 - 28 Endowments and Estate Giving, National Herb Garden, 2000-
 - 29 Financial Statements, 2006-2012
 - 30 Financial Statements, 2013-2015
 - 31 Gifts, 1988-2003
 - 32 Gifts-in-Kind, 1999
 - 33 Gifts-in-Kind, 2001
 - 34 Personnel Policy, 1993
- 12.1 Budget, Finance, and Personnel Development
- 1 Endowment Committee Notebook, 1992
- 12.2 Budget, Finance, and Personnel Development
- 1 Correspondence, Unit Dues, 1989-
 - 1.1 Journal entry, Tax exempt status, property tax, 1991
 - 2 Reports, Comparative Statement of financial position, 1999
 - 3 Reports, Proposed Sources of increased income
 - 3.1 Reports, Budget Review, 1994-1995
 - 3.1.1 Reports, Budget Review, Dues increase proposal, 1994
 - 3.2 Reports, Investment Committee, 1994-1996
 - 4 Reports, Budget, 1991-2001
 - 4.1 Reports, Budget, District Delegates, 1999
 - 5 Reports, Insurance reports and correspondence, 1989-
 - 5.1 Reports, Insurance reports and correspondence, 1989-
 - 5.2 Reports, Insurance reports and correspondence, including rare books and discussion of Blackwell Prints 1989-
 - 6 Reports, Statement of audit, 2004
 - 6.1 Reports and correspondence, Finance Committee, 2000
 - 7 Reports and correspondence, Investment Manager Selection
 - 8 Reports and correspondence, Investment Manager Relationship, Cobble Hill, 2001
 - 8.1 Reports and correspondence, Investment and endowment goals, 1989-
 - 9 Reports and correspondence, Job descriptions, 1989-
 - 10 Reports and correspondence, personnel, 1989-

- 11 Reports and correspondence, internal review procedures and updates
- 12 Reports and correspondence, Procedure for incoming and outgoing checks
- 13 Reports and correspondence, Complaint of Dissolution, 1991
- 14 Reports and correspondence, Representation letter, Lukanc, John, 1999

R.G. 8 National Organization, 1988-Present
Series 1.2 Education and Outreach

Box

- | | |
|----------|---|
| 1 | <u>Folder</u> |
| 1 | Brochures and pamphlets, 1988- |
| 2 | General Information Notebook, 2001 |
| 3 | Plants of Interest Throughout the Year in the NHG, A Tour Guide's Guide, 2013-2014 (by Erin Holden, Intern) |
| 4 | Volunteer Development documents |
| 5 | NASA Outreach program info |
| 6 | National Herb Garden Correspondence, to 1990 |
| 7 | National Herb Garden Correspondence, 1991- |
| 8 | National Herb Garden Correspondence, 1991-, Presentation, audiotape, Rea, Betty |
| 9 | National Herb Garden Correspondence, 2001, Cookbook proposal |
| 10 | National Herb Garden Correspondence, Study group proposal |
| 11 | National Herb Garden Correspondence, Intern |
| 12 | National Herb Garden Correspondence, National Arboretum Information pubs. |

1.1 National Herb Garden, cont.

1.2 Research Grants, List of Grant Recipients, 1989-2000

- | | | |
|----|-------|--|
| 1 | _____ | , Grant Reports, 1990, Staples & Kristiansen |
| 2 | _____ | , Grant Reports, 1990, Staples & Kristiansen |
| 3 | _____ | , Grant Reports, 1990, Paul R. Neal |
| 4 | _____ | , Grant Reports, 1991, John M. McMahon |
| 5 | _____ | , Grant Reports, 1991, Susan Wilson |
| 6 | _____ | , Grant Recipient, 1992, Denise King |
| 7 | _____ | , Grant Report, 1992, Nancy Nahra |
| 8 | _____ | , Grant Report, 1993, Susan Anderson |
| 9 | _____ | , Grant Report, 1993, Debra Knapke |
| 10 | _____ | , Grant Report, 1993, Lester A. Wilson |
| 11 | _____ | , Grant Report, 1994, Richard A. Deyo |
| 12 | _____ | , Grant Report, 1994, Robert DiSilvestro |
| 13 | _____ | , Grant Report, 1995, Robert Wick |
| 14 | _____ | , Grant Report, 1996, Marion Chan |
| 15 | _____ | , Grant Report, 1996, Jean Hunter |
| 16 | _____ | , Grant Report, 1996, Ryan J. Huxtable |
| 17 | _____ | , Grant Report, 1997, Schaefer & Bauml |
| 18 | _____ | , Grant Report, 1999, Martha Case |
| 19 | _____ | , Grant Report, 2000, Allison Davis |

- 20 _____, Grant Report, 2000, Alain Touwade
- 21 _____, Grant Report, 2000, Alain Touwade
- 22 _____, Grant, Report, 2000, Alain Touwade

1.3 Research Grants, List of Grant Recipients, 2001-

- 1 Miscellaneous grant recipients, 2001
- 2 _____, Grant Report, 2001, Jessie Keith
- 3 _____, Grant Report, 2001, Jessie Keith
- 4 _____, Grant Report, 2002, Jo Morse
- 5 _____, Grant Report, 2003, Aswini Pai
- 6 _____, Grant Report, 2003, Rachel Williams
- 7 _____, Grant Report, 2006, Juli Wyatt
- 8 _____, Grant Report, 2007, Jeanne Peters
- 9 _____, Grant Report, 2008, Laura Wright
- 10 _____, Grant Report, 2010, Applications, no grant issued
- 11 _____, Grant Report, 2011, Applications, no grant issued
- 11 _____, Grant Report, 2012, Applications, no grant issued

1.4 Donald Samuel Classroom Grant for Educators, Grant Reports

- 1 Donald Samuel grant applications, 2011
- 2 Donald Samuel grant applications, 2011
- 3 Donald Samuel grant applications, 2012
- 4 Donald Samuel grant applications, 2013

1.5 Grants for Educators, Correspondence and applications

- 1 Grant for Educators, Misc. correspondence
- 2 Grant for Educators, Grant Report, 2005, Our School Subherban Garden
- 3 _____, Grant Report, 2005, Pat Larson
- 4 _____, Grant Report, 2005, Phyl Solomon and Amy Wagenfeld
- 5 _____, Grant Report, 2007, Herbs and Herbarium
- 6 _____, Grant Report, 2008, Beyond the Chia Pet
- 7 _____, Grant Report, 2010
- 8 _____, Grant Report, 2011
- 9 _____, Grant Report, 2012
- 10 _____, Grant Report, 2013
- 11 _____, Grant Report, 2014
- 9 _____, Grant Report, 2015
- 10 _____, Grant Report, 2016
- 11 _____, Grant Report, 2017
- 12 _____, Grant Report, 2018

2 Presentations

- 1. Disc #1 HSA Basil Project, 2003
- 2. Disc #2 Anne Abbott, 2005

- 3. Disc #3 Scented Geraniums, 2006
- 4. Disc #4 Ann, Karinka, Donna, 2007
- 5. Disc #5 President's reception, 2007
- 6. Disc #6 Storycorp recording, 2008
- 7. Disc #7 Storycorp recording, 2008
- 8. Disc #8 Storycorp recording, 2008
- 9. Disc #9 Awards presentation, 2008
- 10. Disc # 10 Power Point, Annual Meeting, 2008
- 11. Disc #11 Festival at Round Top, 2009
- 12. Disc #12 HSA Connection, 2012
- 13. Disc #13 Notable Native, n.d.

14. Cassette #1

Jim Adams Basil Interview, 2003

15. Cassette #2

Adelma Simmons Interview, n.d.

16. VHS #1 HSA Nor Calif. Unit Symposium, 2000 (tape 1)

17. VHS #2 HSA Nor Calif. Unit Symposium, 2000 (tape 2)

3 HSA Library Accessions Record, 1972-1998, including de-accession notations

3.1 Library and Archives History, Records and correspondence, 1990-2014

- 1 Records and correspondence, 1989
- 1.1 Records and correspondence, 1990-1994
- 2 Records and correspondence, 1995-1999
- 3 Records and correspondence, 2000
- 4 Records and correspondence, 2001
- 5 Records and correspondence, 2002
- 6 Records and correspondence, 2003-2004
- 7 Records and correspondence, 2005-2009
- 8 Records and correspondence, 2010-2104

3.2 Library and Archives History and Records, projects and committee reports, 1989-

- 1 Archivist's Report, 1988-1989
- 2 Booklists, misc.
- 3 Fee schedule, 1999
- 4 Fuchs Projects documents
- 5 Guidelines for gifts, 2002
- 6 History of HSA Archives, by James Shelley
- 7 HSA Bibliography, 2002
- 8 Library Brochure, n.d.
- 9 Library Committee Report, 1991
- 10 Library Committee Report, 1992
- 11 Library Committee Report, 1993
- 12 Library Committee Report, 1994
- 13 Library Committee Report, 1995
- 14 Library Committee Report, 1996

- 15 Library Committee Report, 1997
 - 16 Library Committee Report, 1998
 - 17 Library Committee Report, 1999
 - 18 Library Committee Report, 2000
 - 19 Library Committee Report, 2002
 - 20 Library Inventory, 1993
 - 21 Library Janus Project, 1994
 - 22 Library Study, feasibility, 1993
 - 23 Library Study, feasibility, 1994
 - 24 Library Survey, 1994
 - 25 Library Survey, 2001
 - 26 Library National Treasures Program correspondence
 - 27 Library NOBS Newsletter article, 1993
 - 28 Library regulations, n.d.
 - 29 Library, slide library documents
 - 30 Library, Rare Books Collection development and item inventory
- 4 Archives Development and Support
 - 1 Archives Administrative Reports, 1991-
 - 2 Archives Inventory, Safety Deposit, 1991
 - 3 Archives Acquisitions, Forms, 1988
 - 4 Archives Correspondence, 1974
 - 5 Archives Misc.
 - 6 Archives, Relocation to Basement
 - 7 Archives Development
 - 8 Archives Priscilla Sawyer Lord Room Dedication
 - 9 Archives Development Correspondence
 - 10 Archives Inventory, 1995
 - 5 Library Reports and Correspondence
 - 1 Correspondence, Boice, Martha
 - 2 Correspondence, Chadwick, Alenka
 - 3 Correspondence, Committee reports, 1989-1993
 - 4 Correspondence, Committee reports, 1994-
 - 5 Correspondence, Martin, Lisa
 - 6 Correspondence, Meyers, Michele
 - 7 Correspondence, Morss, Elizabeth, estate of
 - 8 Correspondence, Woodburn, Elizabeth
 - 8.1 Disaster plan, 1999
 - 9 Misc. Correspondence, 1989-1999
 - 6 Rare Books Reports and Correspondence
 - 1 Rare books, appraisal documents, 1989-
 - 2 Rare books, appraisal documents, Herball of John Gerarde
 - 3 Rare books, conservation and repair
 - 4 Rare books, correspondence, Johnston, Stanley

- 5 Rare books, correspondence, Culpeper, re. Edition and dates,
 - 6 Rare books, donation, Morey, Elsie, (Helen H. Darrah Collection)
 - 6.1 Rare books, donation/purchase, Kramer, Jack, (Language of Flowers Collection)
 - 7 Rare books, Holden books sold in 2017
 - 8 Rare books, Holden inventory, 1989-
 - 9 Rare books, lists and inventories, other than Holden
 - 10 Rare books, Misc. correspondence
 - 11 Rare books, Misc. correspondence, Boice, Martha
 - 12 Rare books, exhibit text, 1989-
- 7 Rare Books notebook, 2010-2019, including photographs of Holden holdings and updated catalog records (2019)
- 8 Slide scripts and correspondence
- 1 Slide lecture program, documents and correspondence
 - 1.1 Slide lecture program, Herbarium proposal correspondence
 - 1.2 Slide lecture program, program description
 - 2 Slide lecture, "Artist in Thyme"
 - 3 Slide lecture, "Construction of an herb garden"
 - 4 Slide lecture, "Fragrance and potpourri"
 - 5 Slide lecture, "Gardens of Williamsburg"
 - 6 Slide lecture, "Herbs a beginners guide"
 - 7 Slide lecture, "Herb garden design"
 - 8 Slide lecture, "Herb gardening"
 - 9 Slide lecture, "Herb garden of the Western Reserve Unit of HSA"
 - 10 Slide lecture, "Herbs for use and delight"
 - 11 Slide lecture, "Herbs of Greece," versions #1 & #2
 - 12 Slide lecture, "Historical medicinal plants," Versions #1 & #2
 - 13 Slide lecture, "National Herb Garden," by Portia Meares, Ruth Smith, and Janet Walker
 - 14 Slide lecture, "New Zealand," including plant list
 - 15 Slide lecture, "Potpourri and Old Roses"
 - 16 Slide lecture, "Powers and cures"
 - 17 Slide lecture, "Public herb gardens," sponsored by the Chattahoochee Unit
- 9 Travel programs, seminars, interviews, and speakers events, 1989-
- 1 Herbs and English Gardens Traveling Education Seminar, 1999
 - 2 Speaker Registry, 2000
 - 3 *Pelargoniums: An Herb Society of America Guide* interview text, 2006

R. G. 8 National Organization, 1988-Present
Series 1.3 Growth and Development

- 1.1 Headquarters
 - 1 Search Committee
 - 2 Search Fund

- 3 Clippings
- 4 Building History
- 5 Drawings, Herb Garden
- 5.1 Drawings
- 6 Purchase of Vineyard House
- 7 Boston, Termination of Lease
- 8 Move to Kirtland
- 9 Services
- 10 Curatorial Acquisitions
- 11 Funds: Vineyard, Curatorial, Building
- 12 Restoration and Remodeling
- 13 Misc. Donations
- 14 Library – Rare and Special Books
- 14.1 Library Development, Creating a Circulating Collection, 1990
- 15 Legal – Real Estate Tax Exemption

- 2
 - 1 Library Remodel, 1989
 - 2 Landscaping Fund, 1ST Anniversary
 - 3 Landscaping, 1989
 - 4 vacant
 - 5 Building Maintenance, 1992
 - 6 Inventory
 - 7 vacant
 - 8 vacant
 - 9 Headquarters Dedication, Guestbook for Dedication
 - 10 Headquarters programs and events, 1988-
 - 11 Headquarters misc. Correspondence, 1988-
 - 11.1 Headquarters Remodeling, 1991
 - 12 Headquarters picnic, 1999
 - 13 Headquarters picnic (2), 1999

- 2.1
 - 1 Headquarters Merger Correspondence, 1989
 - 2 Headquarters Road Signs Correspondence, 1995
 - 3 Headquarters Agreements, Quit Claim Deed, Waiver, 1990-1991
 - 4 Headquarters appraisal, 2005

- 3 Projects and planning
 - 1 Project Plans, 1998-1999
 - 2 Fuch's Herbal Project Correspondence
 - 3 Zonal Project Correspondence
 - 4 Zonal Project, Zone 3
 - 5 Zonal Project, Zone 4
 - 6 Zonal Project, Zone 5
 - 7 Zonal Project, Zone 6
 - 8 Zonal Project, Zone 7
 - 9 Zonal Project, Zone 8
 - 10 Zonal Project, Zone 9
 - 11 Zonal Project, Zone 10

- 11.1 Strategic Planning Reports, 1989, 1990, 1991
 - 11.2 Strategic Planning Report, 1994, 1995, 1996
 - 11.3 Strategic Planning Report, 1999
 - 11.4 Strategic Planning Report, 2001
 - 12 Capital Campaign Project Feasibility Study Report, 1998
 - 12.1 Capital Campaign documents and correspondence, 2001-2002
 - 12.2 General Endowment Fund documents and correspondence
 - 13 Strategic Planning Report, 2001, 2004
 - 14 Member Benefits Survey, 2013
 - 15 Holden plant sale documents, 2000
 - 16 Herb Interviews project, Basil, 2003
 - 17 Herb Interviews project, Garlic, 2004
 - 18 Herb Interviews project, Lemon Balm, n.d.
 - 19 Herb Interviews project, Organum, 2004
 - 20 Native Herb Plant Study project, 1988-1990
 - 21 Plant Conservation Alliance project, 2004
 - 22 Herb of the year project correspondence, Dr. Pederson, 1999
 - 23 Promising Plants project presentation, 1997
 - 24 Promising Plants report, 2003
 - 25 Promising Plants report, 2001
 - 26 Promising Plants report, 2004
 - 27 Promising Plants report, 2005
 - 28 Promising Plants report, 2006
 - 29 Promising Plants report, 2012
- 4 Projects and planning, cont.
- 1 NHG Cookbook Project correspondence
 - 2 Educational Programming Development agreement, 2005
- 5 Projects and planning, cont.
- 1 Seed Saver Program Correspondence, 1989-
 - 2 Botanical Art Project, 2000-2002, Promotion and income
 - 3 Seed Exchange List, 2001 (5), 2003 (5), 2005 (1), 2006 (2)
 - 4 Plant Collections, no date (2), 2002, 2004, 2005, 2006
- 6 Website and social media planning and development
- 1 HSA website text, 1999
 - 2 HSA library website proposal, 1999
 - 3 HSA in-house web site maintenance proposal, 1999
 - 4 HSA website Ad hoc committee correspondence and notes, 2003
 - 5 HSA website change form, 2008
- 7 Public Relations and marketing
- 1 PR/Marketing binder, correspondence and proposals, 2005
 - 1.1 PR/Marketing binder, correspondence and proposals, 2005 (2)
 - 2 PR/Marketing correspondence, news releases, and advertisements, 1989-

- 3 PR/Marketing binder, including gift shop inventory
 - 3.1 PR/Marketing binder, including gift shop inventory
 - 3.2 Gift Shop Gallery Gift list booklets, 1995-1998
- 8 Membership development and support, 1989-
 - 1 Membership Committee correspondence, 1993-1995

R. G. 8 National Organization, 1988-Present
Series 1.4 Awards and Recognition

Box Folder

- 1
 - 1 Awards Committee Correspondence, 1989-1996
 - 2 Awards Committee Correspondence, 1997-1978
 - 3 Awards Committee Correspondence, 1999
 - 4 Awards Committee Correspondence, 1999-2000
 - 5 Awards Committee Correspondence, 2000-2001
 - 6 Awards Committee Correspondence, 2001-2002

- 1.1
 - 1 Awards Committee Correspondence, 2002-2003
 - 2 Awards Committee Correspondence, 2003-2004
 - 3 Awards Committee Correspondence, 2004-2005
 - 4 Awards Committee Correspondence, 2005
 - 5 Awards Committee Correspondence, 2005-2006
 - 6 Awards Committee Correspondence, 2006
 - 7 Awards Committee Correspondence, 2006-2007
 - 8 Awards Committee Correspondence, 2007-2008
 - 9 Awards Committee Correspondence, 2008
 - 10 Awards Committee Correspondence, 2008 (2)
 - 11 Awards Committee Correspondence, 2009
 - 12 Awards Committee Correspondence, 2009-2010
 - 13 Awards Committee Correspondence, 2010
 - 14 Awards Committee Correspondence, 2011
 - 15 Awards Committee Correspondence, 2012
 - 16 Awards Committee Correspondence, 2013
 - 17 Awards Committee Correspondence, 2014
 - 18 Awards Committee Correspondence, 2015
 - 19 Awards Committee Correspondence, 2016
 - 20 Awards Committee Correspondence, 2017
 - 21 Awards and recognition documents
 - 22 Awards and recognition, Herbs at Poplar Heights, 2013-2014
 - 23 Awards and recognition, Rosemary Circle Honorees, 1988-1999
 - 24 Awards and recognition, Rosemary Circle Honorees, 2000-2002
 - 25 Awards and recognition, Rosemary Circle Honorees, 2003

2 Awards of Merit, Helen De Conway Little Medal of Honor , winners

1	Tucker, Arthur O.	1990
2	Neavill, Elizabeth Barrick	1991
3	Bryce, Elizabeth Field	1992
4	Truitt, Henrietta Gould	1994
5	Jyurovat, Genevieve Gleason	1995
6	Barrow, Jamie	1996
7	March, Sylvester	1997
8	Muench, Betty	1998
9	Redelmeier, Flavia	1999
10	Simon, James E. PhD	2000
11	Van Nostrand, Janet	2001
12	Amidon, Caroline	2002
13	Trevarrow, Mary Sue	2003
14	Stevens, Nancy Comey	2004
15	Core, Amy McKay	2005
16	Brobst, Joyce	2006
17	Miller, Mary Bowler	2007
18	Rouleau, Ruth	2008
19	Mathura, Kirti	2009
20	Wohlleb, Mary Rimmel	2010
21	Snyder, Yvonne	2011
22	Smith, Ruth	2012

Awards of Merit, Nancy Putnam Howard Award, Shimizu, winners

A1	Martin, Joy	1989
A2	Hyde, Cyrus	1991
A3	Felton, Elisa	1992
A4	Talbert, Rexford	1993
A5	Snyder, Yvonne	1994
A6	Reed, Joanna McQuail	1995
A7	Walker, Janet Gilliher	1996
A8	Hill, Madalene	1997
A9	Tucker, Arthur O.	1998
A10	Bruch, Elisabeth S.	1999
A11	Taylor, Jane L. & J. Lee Taylor	2000
A12	Jackson, Elaine W.	2001
A13	Talbot, Rebecca H.	2002
A14	Williams, Barbara	2003
A15	Adams, Jim	2004
A16	Amidon, Caroline W.	2005
A17	Haynes, Jane E.	2006
A18	Scannell, Ellen Ann	2007
A19	Becker, Dottie & Jim	2009
A20	Mieseler, Theresa	2010
A21	Brobst, Joyce	2011
A22	Haynie, Don	2012

Awards of Merit, Gertrude Foster Award, winners

B1	Dowden, Anne Ophelia	1999
B2	Kavasch, E. Barrie	2000
B3	Bown, Deni	2002
B4	Meyer, Frederick	2003
B5	Tucker, Arthur O.	2004
B6	DeBaggio, Thomas	2004
B7	Barclay, Gwen	2005
B8	Hill, Madalene	2005
B9	Sumner, Judith PhD	2007
B10	Schlosser, Katherine	2008
B11	Crocker, Pat	2009

Awards of Merit, Joanna McQuail Reed Award, winners

C1	Donley, Eleanor	2004
C2	Kish, Jan	2005
C3	Belsinger, Susan	2006
C4	Rountree, Susan Hight	2007
C5	Bonitz, Dorothy	2008
C6	Flowers, Henry	2009
C7	Woodyard, Joanne	2010

Awards of Merit information, 1989-

1	Awards background, general information
2	Nancy Putnam Howard Award, general information
3	Gertrude B. Foster Award, general information
4	Helen de Conway Little Award, general information
5	Joanna McQuail Reed Award, general information
6	Certificates, examples

3 Awards of Merit, Certificate winners

D1	Clark, Lorrie; Compton, Leila A.; Harvey, Blanche; Meyer, Frederick; Schultes, Dr. Richard; Taylor, Mary Peters	1989
D2	Bates, Marion; Smith, Ruth	1990
D3	Harrison, Grace Adams	1991
D4	Blair, Sherran; Crawley, Lottie; Kutscher, Emily; Richardson, Artemas; Spencer, Dorothy	1992
D5	Cozart, Jean; Field, Thelma; Kenny, Pat; Genyk, Alice B.; Neil, Bern; Thompson, Jane E.	1993

D6	Donley, Eleanor L.; Gabb, Cordelia; Fisher, Jean; Gross, George; Hirota, Seiko	1994
D7	Bonitz, Dorothy; Milligan, Mary; Minick, Margy	1995
D8	Barclay, Gwen; Centimole, June; Isdale, Eleanor; Janssen, Joan	1996
D9	Chandler, Helen; Fisher, Donald E.; Ober, Mary; Kestner, Dr. Arlene; Sluder, Elizabeth; Townsend, Mary	1997
D10	Carmichael, Marcia; Cox, Peggy Jo; Givens, Jean; Mathieu, Rosella; Postell, Elizabeth; Viers, Dorothy	1998
D11	Abbott, Anne; Bell, Roxanne; Champaign, Bobbie; Oster, Maggie	1999
D12	Bishop, Jolie; Brown, Robin; Thwing, Sally; DeBaggio, Thomas; Pivarnik, Bernice Crews, Helen	2000
D13	Anderson, Beverly S.; Miller, Ginny; Pinder, Martha; Sly, Marilyn	2001
D14	Cartwright, Mary; Fowler, Marie; Ober, Richard; Quarterman, Dr. Elsie; Schachle, Rosa; Tucker, Dalmae	2002
D15	Goodman, Pat; Livingston, Elaine; Sellers, Jo; Smith, Carolyn; Versfelt, Mary	2003
D16	Chandler, Helen; DePiero, Elizabeth; Strickert, Waneta; Wissing, Connie	2004
D17	Cancel	2005
D18	Burdsall, Gertrude; Cleavinger, Lola; Cleghorn, Betty; deHoll, Sandra; Levien, Connie	2006
D19	Fennell, Beverly; Howard, Lois Jean; HacsKaylo, Edward; Miller, Preston, Wood, Susan	2007
D20	Dennis, Dr. Lauretta; Nuechterlein, Mary; Smith, Anna; Plucinsky, Priscilla; Scanapio, Tony	2008
D21	Champaign, Marsden; Cotter, Joyce; Parus, Bille Richarson, Lou; Doolittle, Lori; Jackson, Mary Nell	2009
D22	Lansley, Deborah; Seeley, Gail; Benee, Curtis; Sidorsky, Phyllis; Montgomery, Katherine; Rea, Dr. Edward	2010
D23	Brouse, Barbara; Dressler, Lucille; Reich, Anna;	2011
D23.1	Steinmetz, Thea; St. Hilaire, Peni; Sue Arnold	2011
D23.2	Benson, Pat	2011
D23.3	Bougeois Daly, Hilda	2011
	Johnsen, Patricia; Gasaway, Betty; Plummer, Sara	
D24	Keif, Joan; St.Hilaire, Penni; Steinmetz, Thea;	2012
D24.1	Certificate nominees	2012
D25	Wilson, Ann; Ragland, Mark; Brubaker, Jane	2016

R. G. 9

Members Papers

Box

Folder

1 Priscilla Sawyer Lord

- 1 New England Unit Material
- 2 Correspondence, 1975-82
- 3 Correspondence, 1971-90
- 4 Research Papers
- 5 1983 HSA History, Notes
- 6 Eastern Yacht Club
- 7 Audio Tape

- 2(Flat) Priscilla Sawyer Lord Papers, Research Notes

- 3(Flat) Priscilla Sawyer Lord Papers, Research Notes

- 4
 - 1 Remmel, Ruth and Roland, Correspondence
 - 1.1 Remmel, Ruth and Roland, Correspondence and clippings
 - 2 Remmel, Roland, Personal Papers and Research Papers

- 5 Mathieu, Rosella
 - 1 Annual Meeting, 1975
 - 2 Articles, Drafts of Articles
 - 3 Articles, Published
 - 4 Biographical/Awards
 - 5 Correspondence, 1950-2005
 - 5.1 Correspondence, 1950-2005
 - 6 Correspondence with Frances Williams
 - 7 Flora Therapy
 - 8 Fragrant Herb Farm
 - 9 Herb Profiles
 - 10 Manuscript/Draft Herb Growers
 - 11 Manuscript/Draft Revised
 - 12 Manuscript/Draft Comfrey
 - 13 Manuscript/Draft Gifts to Make
 - 14 Manuscript/Draft Book
 - 15 Manuscript/Draft Potpourri
 - 16 Rose/Spice Beads
 - 17 Wreaths
 - 18 News Clippings, Photographs
 - 19 Recipes, Potpourri
 - 20 Programs
 - 21 Roses
 - 22 Fragrant Herb Farm Kitchen Seasoning
 - 23 Fragrant Herb Farm Herb Grower's Complete Kit
 - 24 *Potpourri for Pleasure and Profit*, draft, and *Adventures in Potpourri*, chapter one

- 6 Foster, Gertrude
 - 1 Girard Society, Newsletters, Membership, Correspondence with Jane Warner (WI Unit)
 Remmel, Ruth
 - 1 Misc. Correspondence and clippings

Sly, Marilyn

- 1 Binding, leather
- 2 "Cokyntryce"
- 3 "Culinary Herbs and Condiments"
- 4 "Exploring the Herb Situation"
- 5 "A Garden For Bees"
- 6 "Herb Conference: New York Botanical Gardens"
- 7 "Herb Usage in 1752"
- 8 Kneipp, Sebastian, Biography
- 9 Misc. Publications
- 10 "A Modern Herbal," Review. Times Literary Supplement, 1931
- 11 "Selected Herb Recipes: The Woman's Auxiliary of the Boston Botanical Gardens"
- 12 "There's Fennel for you"

Morss, Betty

- 2 Misc. Correspondence, 1980-
- 3 Misc. Correspondence, 1980-

R. G. 10 Ephemera

Box

- 1 Miscellaneous cards, postcards, printed broadsides, and advertisements
Miscellaneous herb related recipes
Miscellaneous herb related songs
- 2 Herb related catalogues

**Inventory of Records and Manuscripts in
The Herb Society of America Archives, 1933-2019
Addendum**

Potpourri jars, Mathieu Collection

Archives. RG 6, Memorabilia
Rosella Mathieu Potpourri Jars



Potpourri Jar #1

4 broken fragments and 1 bag of various unidentified herbs. Blue outline with pink florals and green leaves. Approximately 17cm (original form).



Potpourri Jar #2

19 broken fragments, 1 bag of small fragments, and 1 bag of unidentified herbs (with the label "03/16/03"). Blue and white vine-like and floral design. Fragments vary in size from <1cm to 12cm.



Potpourri Jar #3

1 lid, 2 broken pot fragments, and 1 large bag of unidentified herbs. Pale green with multicolored florals and red outlining. Lid is 18x18x9.5cm, and pot (in original form) is 21.5x26x8cm.



Potpourri Jar #4

1 jar with small fragments inside. Alternating framed patterns of geometric design and florals. Blue and white with brown framing. 14.5x11.5cm.



Potpourri Jar #5

1 jar, 1 lid. Teal background with oriental multicolored designs and red figures. Patterned multicolor edges. Lid is plain white. Potpourri still inside jar, full. Jar is 13x12.5cm, lid is 6.5x2cm.



Potpourri Jar #6

1 jar with a few unidentified herbs inside and 1 lid. Lid has brown edging, with a picture of orange flowers and green leaves on top. Pot has same picture on side, and a label: "Gentlemen's Choice". Both have grey background with brown speckling. Jar is 11x9.5cm, and the lid is 5.5x5.5cm.



Potpourri Jar #7

1 box with attached lid. Black and brown wood grain pattern with gold metal corners, side decorations, and top decoration. Gold clasp. Unidentified herbs inside. Label on inside that reads "This potpourri dates from 1955. Scented blotters that come in the mail have been cut up and added but 'basically' the scent, though changed and mellowed down, is the same. 1955". 12.5x12.5x18cm.



Potpourri Jar #8

1 jar with powdered bits of herb inside. 1 stopper, 1 lid. Stopper is white. Lid is dark blue with thin gold band. Jar is dark blue with a gold and green picture of grapes. Label on jar that says: "8-2 Summer's Pleasure". Jar is 10.5x9.5cm, stopper is 4.7x4.7cm, and lid is 5x5cm.



Potpourri Jar #9

1 jar with herbs inside. 1 white stopper, 1 lid. Lid and jar have blue and white floral patterning. Jar has label: "Honeysuckle Rose 1979". Jar is 11x9.5cm, stopper is 4.5x4.5cm, and lid is 5x5cm.



Potpourri Jar #10

1 jar with unidentified herbs inside. 1 lid. Lid is blue with one white flower on top. The middle of the flower is red and yellow. The jar is blue and patterned with these flowers. Jar is 10.5x10cm, lid is 5x5cm.



Potpourri Jar #11

1 jar with an unidentified herb inside. 1 lid. Lid and jar are pale red and white. Lid is 2x1cm, jar is 4.5x3.5cm.



Potpourri Jar #12

1 jar with unidentified herbs inside. 1 matching lid. Jar is white with blue designs. A tree trunk is depicted on the jar with flowers all around. A label on the jar says: "1979". There is a blue patterned border by the opening. Lid has a blue border and a picture of a house on top. Lid is 5.5x2cm and jar is 11x9.5cm.



Potpourri Jar #13

1 jar with powdered unidentified herbs inside. 1 lid. Jar and lid are dark blue with white, light blue, and red engraved floral patterns all over. 7 green fuzzy stickers on bottom for jar to stand on. Label on bottom that says "2003704 The Bombay Company \$9.00". Lid is 9x2.5cm, jar is 9x4cm.



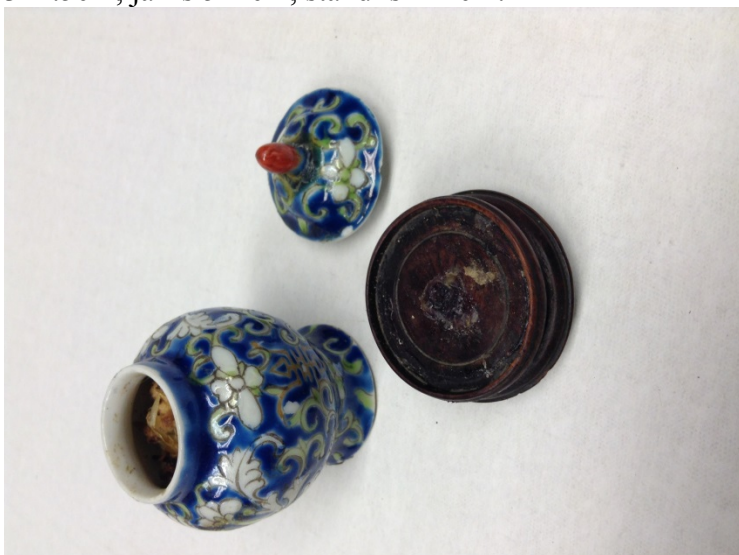
Potpourri Jar #14

1 jar half-full of unidentified herbs. 1 white stopper. 1 lid. Jar is pale green with a label that reads "Helen R. 1965". Lid is pale green with ceramic white and pale pink roses, rosebuds, and green leaves on top. Lid is 5.5x2.5cm, stopper is 5.5x1.2cm, jar is 9.5x8.5cm.



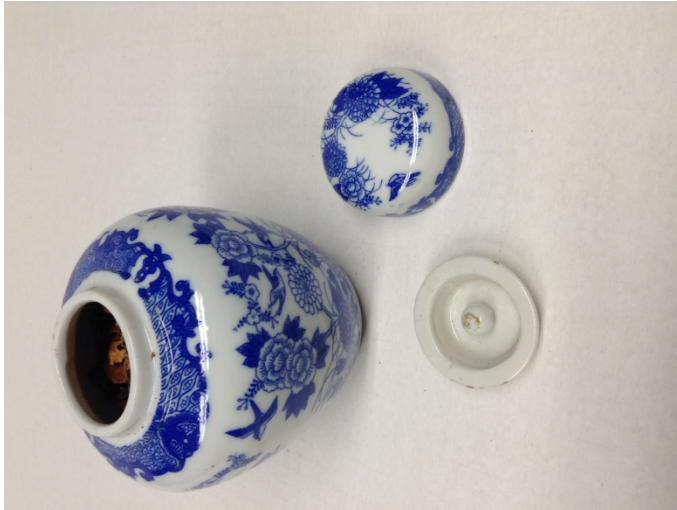
Potpourri Jar #15

1 jar half-full of unidentified herbs. 1 lid. 1 wooden stand with a small chip on one side. Lid and jar are dark blue with engraved green and white florals and vines. Lid has a small red topper. Lid is 3x1.5cm, jar is 5x4cm, stand is 4x2cm.



Potpourri Jar #16

#16 is identical to #15, except for no chip in wooden stand and it is completely full of unidentified herbs. Dimensions are the same.



Potpourri Jar #17

1 jar full of unidentified herbs. 1 white stopper and 1 lid. Jar and lid are white with dark blue patterned borders, florals, and small depictions of birds. Lid is 5.5x2.5cm, stopper is 4.5x1.2cm, jar is 11x9.5cm.



Potpourri Jar #18

1 jar half-full of unidentified herbs. 1 lid and 1 wooden stand, with part of the base chipped off. Jar is painted black with golden borders and patterns, with three golden frames with red flowers inside. A label on the jar reads "11-2 Flowers of India 1979". The lid's border has alternating black and gold frames with red flowers. The top is also painted black and gold, with a frame identical to the ones on the jar. There is a label on the stand that reads "3.00 + 18 2 3/4". Lid is 6.8x3cm, jar is 8.5x6.5cm, stand is 8.5x3cm.



Potpourri Jar #19

1 jar full of unidentified herbs. 1 rubber stopper. 1 lid. Jar and lid are white with dark blue patterned borders. Jar has dark blue florals with two large depictions of birds and a label that reads "7-2". Lid has dark blue florals, blank label. Lid is 5.5x2.2cm, stopper is 4.5x1cm, jar is 10.5x9cm.



Potpourri Jar #20

1 jar, 1 bag of unidentified herbs inside, 1 lid. Jar is dark blue with label that reads "Magic Garden 1956". Lid is also dark blue, but with engraved geometric designs. Lid is 7.5x2.4cm, jar is 9x12cm.